

Sorbothane®

Standard Products Guide



MADE IN THE U.S.A.

Sorbothane® Standard Products Guide

Table of Contents

» Introduction	3
» Selecting An Isolator	4
» Durometer & Shape Factor	5
» Bushings	6
» Washers	7
Washers with PSA	7
» Isolation Hemispheres	8
Hemispheres with PSA	9
Hemispheres with Felt Dot	10
Hemispheres with Felt Dot & PSA	10
Hemispheres with Urethane Coating & PSA	11
» Stud Mounts Male-Male	12
» Stud Mounts Male-Female	12
» Bumpers Male	13
» Bumpers Female	13
» Isolation Pads – Square	14
Isolation Pads with PSA	15
Isolation Pads with Fabric Top & Bottom	16
Interlocking Pads	16
» Isolation Rings	17
» Isolation Discs – Round	19
Isolation Discs with PSA	20
» Anti-Vibration Leveling Mounts	21
» Sheet Stock	22
» Sheet Stock with PSA	30
» Sheet Stock X-Tra Flex	33
» Strips	33
» Ergonomic Products	34
Insoles	34
Soft-Blow Mallet	34

Sorbothane®

Standard Products Guide

Sorbothane® is a proprietary, viscoelastic polymer. Viscoelastic means that a material exhibits properties of both liquids (viscous solutions) and solids (elastic materials). Sorbothane® material combines shock absorption, good memory, vibration isolation and vibration damping characteristics. In addition, Sorbothane® is a very effective acoustic damper and absorber. While many materials exhibit one of these characteristics, Sorbothane® combines all of them in a stable material with a long life.

- » Sorbothane® has a low creep rate compared to other polymers (rubber, neoprene, silicone, etc.)
- » Sorbothane® has a superior damping coefficient over other polymers from a temperature of -30 to 160 degrees F.
- » Sorbothane® in many applications will out perform fluid-based and foam products in absorbing shock and vibration.
- » Sorbothane® eliminates the need for metal springs to return the system to its equilibrium position after absorbing a shock.

CUSTOM SOLUTIONS

Sorbothane, Inc. engineers can assist you in developing a custom Sorbothane® component when an appropriate isolator cannot be found among the standard products. Sorbothane, Inc. has partnered with a variety of industries to develop isolators that meet or exceed individual requirements. Additionally, Sorbothane® Sheet Stock can be custom cut to a desired shape. Contact the factory for further information at support@sorbothane.com.

ELECTRONICS

This catalog shows “industrial-sized” isolators for loads in pounds, hundreds of pounds and thousands of pounds. Sorbothane® is widely used to isolate delicate electronics – printed-circuit boards, LCD’s, disk drives and other small devices. Space is always tight in these applications.

SHOCK ABSORBERS

In vibration, the wrong design can make matters worse than before. In shock absorption, even a little can improve performance. Consult the factory on your shock applications.

ACOUSTICS

The Sorbothane® hemispheres are world-famous mounts for audio equipment. In addition, where space is tight, thin sheets of Sorbothane®, with or without Pressure Sensitive Adhesive (PSA) can convert a noisy design into a very quiet success.

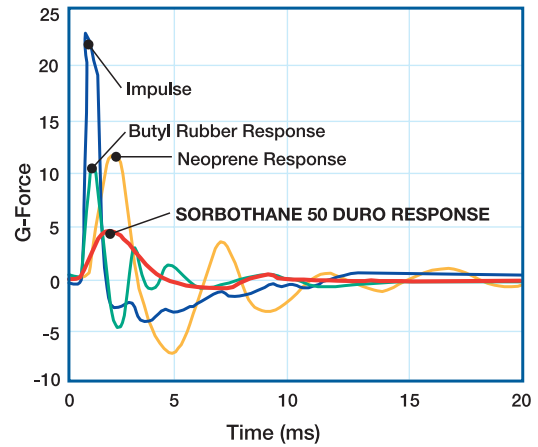
GASKETS

Sorbothane® is a popular material for gaskets because of its chemical resistance, its ability to conform to irregular surfaces, its low creep and its reusability. Its natural tackiness makes it easy to install. Gaskets can be made by you from sheet stock or produced at our factory.

STEPS FOR SELECTING A SORBOTHANE® ISOLATOR

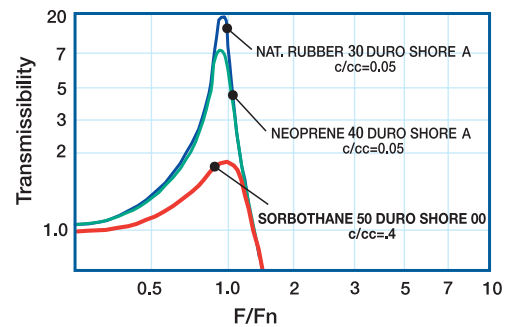
1. Determine the load (weight) of the unit that requires isolation. Divide the weight of the system by the number of isolators to be used. This is the load per isolator. Match the load per isolator to a load rating of a part. Evenly applied across entire pad.
2. Determine the lowest critical frequency (excitation frequency) of the system. For example: RPM of the motor, rate at which a cylinder strokes, output speed of a speed reducer. Divide minute-based information, such as RPM, by 60 to convert to Hertz (cycles per second).
3. Select an appropriate isolator by using the information charts supplied with each product. Generally, an appropriate isolator will create a system natural frequency at least one-third lower than the excitation frequency. For instance, if the source of the vibration is an 1800 RPM motor, then the excitation frequency is $1800/60 = 30$ Hertz. The natural frequency of the isolator should be 20 Hertz or less.
4. Select the isolator that meets the technical and physical requirements of your system. In addition to a part number, you must also specify the durometer of the Sorbothane® part required to get the specified load rating. Do not oversize isolators. Oversized isolators raise the natural frequency and reduce the effectiveness. Sorbothane's standard color is black. Other colors are available for special orders.
5. Remember: A bad design can actually make things worse for vibration damping. Consult the factory if you are having problems.
6. Remember: Sorbothane® works best in compression. If you have a tension application, bushings or a custom variation of the bushings are your best options.

CONTROLLING SHOCK



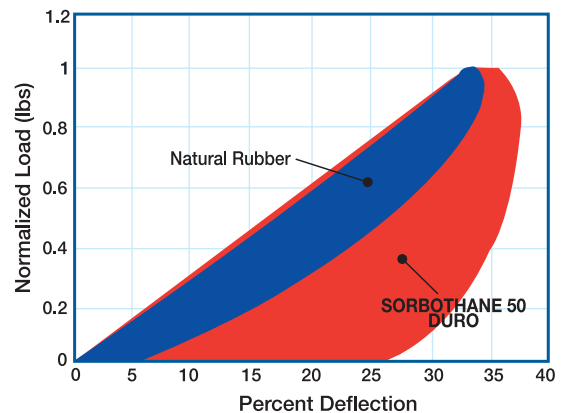
Time Delay Effect of Impulse (Shock) Response of Selected Materials

CONTROLLING VIBRATION



Ratio of Excitation Frequency to Natural Frequency

IMPACT ABSORPTION



Hysteresis (Mechanical Energy converted to heat each cycle)

Durometer

Durometer is a measurement of relative hardness and is used to compare polymers.

Sorbothane® is softer than rubber and most other polymers. Sorbothane® is measured on the Shore “00” scale and has a range of +/- 5 for each durometer.

Most types of rubber and other polymers are specified using the Shore “A” or Shore “D” scales. In comparing stiffness, be aware of the scale being used for the material in question.

The hardness comparison values listed are approximate and should only be used as a guide.

Shape Factors

Shape Factor is a term of art used in the design of elastomer products. It has the virtue of being an easily developed mathematical expression. It quantifies the unique ability of elastomers to react to an applied force by bulging at 90 degrees to the direction of application of the force.

A “high” shape factor indicates a minimal ability to deform. A “low” shape factor indicates a high ability to deform. Implicit in a low shape factor is a low spring rate and the capability to have a low natural frequency.

The Shape Factor is calculated by developing the ratio of the average contact surface (one side) divided by the perimeter area. As such, it can be developed for any shape that can be mathematically described. However, a few standard shapes cover over 90% of all needs.

Product properties developed using the Shape Factor methodology have a nominal accuracy of +/- 15%. More precise product properties require physical testing or Finite Element Analysis (FEA).

Calculating Deflection / Natural Frequency / Spring Rate

Sorbothane, Inc. offers a printable Engineering Design Guide PDF available at sorbothane.com. The guide is available to assist engineers with a practical, hands-on approach to designing with Sorbothane®.

In addition to the printable guide, three interactive Engineering Design “Calculators” can be found on the Sorbothane® website - <https://www.sorbothane.com/engineering-design-guide.aspx>. These calculators cover Load Ratings, Vibration Response and Impact Response for working with both Sorbothane® and Water-Resistant Sorbothane®. As always, the Sorbothane Engineering Team is ready to assist with any project.

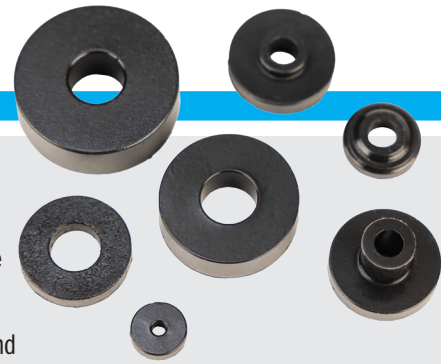
Shore Hardness

Scale Comparison Chart

A	B	C	D	O	Sorbothane®
100	85	77	58		
95	81	70	46		
90	76	59	39		
85	71	52	33		
80	66	47	29	84	98
75	62	42	25	79	97
70	56	37	22	75	95
65	51	32	19	72	94
60	47	28	16	69	93
55	42	24	14	65	91
50	37	20	12	61	90
45	32	17	10	57	88
40	27	14	8	53	86
35	22	12	7	48	83
30	17	9	6	42	80
25	12			35	76
20	6			28	70
15				21	62
10				14	55
5				8	45

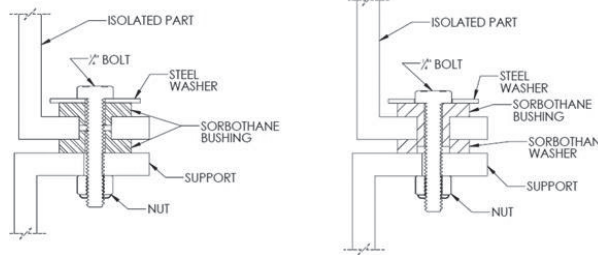


Sorbothane® Bushings & Washers

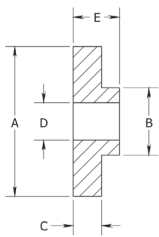
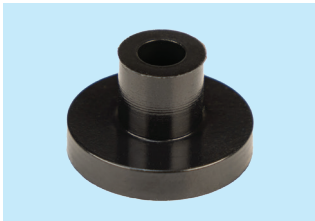


Sorbothane® Bushings and Washers are a cost effective and efficient solution to isolate vibration and absorb shock. Using two bushings together or a bushing and washer(s), you can create a floating bolt that isolates the unit from any metal-to-metal contact. Different durometers allow for different spring rates. Load ratings assume a 10%-20% deflection of the material. This deflection is achieved by a combination of system weight and torquing of the connecting bolts. Do not over torque the bolts as this defeats the intended vibration isolation and shortens bushing life. Use a high-quality (thread deforming) lock nut. Bushings may be used in tension connections.

How to apply Bushings & Washers

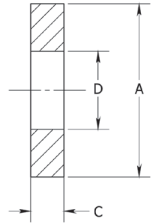
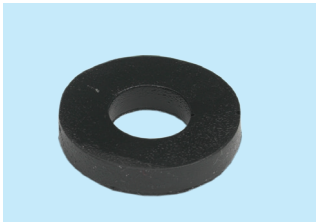


BUSHINGS



PART NUMBER	DIMENSIONS					DURO +/- 5	RATED LOAD (lbs)	NOTES
	A (DIA)	B	C	D	E			
0510030-30-10	0.50	0.22	0.19	0.12	0.39	30	.25 - .60	
0510030-50-10	0.50	0.22	0.19	0.12	0.39	50	.75 - 1.75	
0510030-70-10	0.50	0.22	0.19	0.12	0.39	70	3.5 - 8.0	
0576170-30-10	0.72	0.50	0.15	0.28	0.22	30	.65 - 1.5	
0576170-50-10	0.72	0.50	0.15	0.28	0.22	50	2.0 - 4.5	
0576170-70-10	0.72	0.50	0.15	0.28	0.22	70	8.0 - 20.0	
0510005-30-10	1.00	0.46	0.19	0.28	0.31	30	2.0 - 4.0	
0510005-50-10	1.00	0.46	0.19	0.28	0.31	50	5.0 - 12.0	
0510005-70-10	1.00	0.46	0.19	0.28	0.31	70	24.0 - 60.0	
0510002-30-10	1.00	0.45	0.19	0.25	0.60	30	2.0 - 4.5	
0510002-50-10	1.00	0.45	0.19	0.25	0.60	50	6.0 - 13.5	
0510002-70-10	1.00	0.45	0.19	0.25	0.60	70	26.0 - 65.0	
0510035-30-10	1.00	0.45	0.38	0.25	0.79	30	1.0 - 2.0	
0510035-50-10	1.00	0.45	0.38	0.25	0.79	50	3.0 - 7.0	
0510035-70-10	1.00	0.45	0.38	0.25	0.79	70	13.0 - 33.0	

WASHERS



PART NUMBER	DIMENSIONS					DURO +/- 5	RATED LOAD (lbs)	NOTES
	A (DIA)	B	C	D	E			
0510020-30-10	0.50		0.13	0.13		30	0.40 - 0.75	
0510020-50-10	0.50		0.13	0.13		50	1 - 2	
0510020-70-10	0.50		0.13	0.13		70	4 - 10	
0510010-30-10	0.50		0.19	0.22		30	.20 - .40	
0510010-50-10	0.50		0.19	0.22		50	.50 - 1.25	
0510010-70-10	0.50		0.19	0.22		70	2.5 - 6	
0510012-30-10	1.00		0.125	0.45		30	2.0 - 4.5	
0510012-50-10	1.00		0.125	0.45		50	5.75 - 13.5	
0510012-70-10	1.00		0.125	0.45		70	25.25 - 64.0	
0510001-30-10	1.00		0.19	0.45		30	1 - 2	
0510001-50-10	1.00		0.19	0.45		50	3.5 - 8	
0510001-70-10	1.00		0.19	0.45		70	15 - 35	
0510015-30-10	1.00		0.38	0.45		30	.70 - 1.50	
0510015-50-10	1.00		0.38	0.45		50	2.25 - 5.0	
0510015-70-10	1.00		0.38	0.45		70	9.5 - 23.5	
0510045-30-10	1.25		0.38	0.50		30	2 - 3	
0510045-50-10	1.25		0.38	0.50		50	4.5 - 9	
0510045-70-10	1.25		0.38	0.50		70	20 - 40	
0510050-30-10	1.50		0.50	0.50		30	2 - 4	
0510050-50-10	1.50		0.50	0.50		50	6 - 14	
0510050-70-10	1.50		0.50	0.50		70	30 - 65	

WASHERS

with PSA



PART NUMBER	DIMENSIONS					DURO +/- 5	RATED LOAD (lbs)	NOTES
	A (DIA)	B	C	D	E			
0510003-30-10	1.00		0.19	0.45		30	1 - 2	
0510003-50-10	1.00		0.19	0.45		50	3.5 - 8	
0510003-70-10	1.00		0.19	0.45		70	15 - 35	
0510051-30-10	1.50		0.50	0.50		30	2 - 4	
0510051-50-10	1.50		0.50	0.50		50	6 - 14	
0510051-70-10	1.50		0.50	0.50		70	30 - 65	

Sorbothane® Isolation Hemispheres

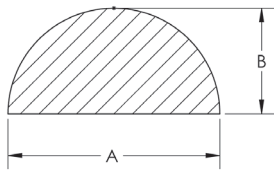
Custom Colors Available

Sorbothane® Hemisphere mounts provide a quick, cost-effective method of isolating bench equipment, small machinery and audio equipment.

Place the hemisphere under the unit to be isolated. Expect a 20 to 30% deflection when statically loaded. Under loading will result in poor isolation. All sizes are available with Pressure Sensitive Adhesive (PSA).



HEMISPHERES



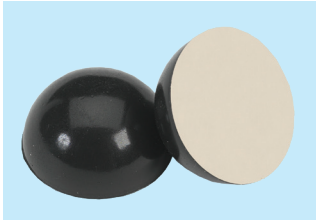
TYPICAL APPLICATIONS:

- » Audio Equipment
- » Video Components
- » Computer & Electronic Devices
- » Sensitive Testing Instruments
- » Small Machinery

PART NUMBER	DIMENSIONS		DURO +/- 5	RATED LOAD (lbs)	NOTES
	DIA.	HT.			
0510100-30-10	0.50	0.25	30	0.2 - 0.5	
0510100-50-10	0.50	0.25	50	0.3 - 0.7	
0510100-70-10	0.50	0.25	70	0.5 - 1.2	
0510110-30-10	0.75	0.375	30	0.5 - 0.9	
0510110-50-10	0.75	0.375	50	1 - 1.8	
0510110-70-10	0.75	0.375	70	1.8 - 3.6	
0510115-30-10	1.00	0.50	30	1 - 2	
0510115-50-10	1.00	0.50	50	2 - 4	
0510115-70-10	1.00	0.50	70	4 - 8	
0510120-30-10	1.25	0.625	30	2 - 4	
0510120-50-10	1.25	0.625	50	5 - 10	
0510120-70-10	1.25	0.625	70	15 - 22	
0510130-30-10	1.50	0.75	30	4 - 7	
0510130-50-10	1.50	0.75	50	7 - 14	
0510130-70-10	1.50	0.75	70	14 - 30	
0510135-30-10	1.75	0.875	30	7 - 12	
0510135-50-10	1.75	0.875	50	12 - 19	
0510135-70-10	1.75	0.875	70	15 - 27	
0510140-30-10	2.00	1.00	30	11 - 16	
0510140-50-10	2.00	1.00	50	17 - 24	
0510140-70-10	2.00	1.00	70	25 - 38	
0510160-30-10	2.25	1.125	30	18 - 26	
0510160-50-10	2.25	1.125	50	31 - 42	
0510160-70-10	2.25	1.125	70	38 - 52	
0510150-30-10	2.50	1.25	30	25 - 35	
0510150-50-10	2.50	1.25	50	45 - 60	
0510150-70-10	2.50	1.25	70	60 - 80	

HEMISPHERES

with PSA



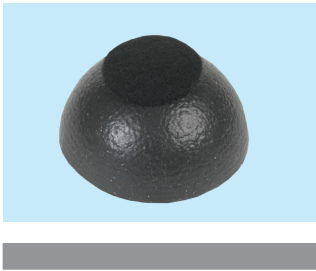
AGGRESSIVE PRESSURE SENSITIVE ADHESIVE

Double coated tape with adhesive features a thin polyester film for dimensional stability and improved handling. The adhesive provides exceptional temperature and chemical resistance and withstands tough application environments. Firm application pressure, and the amount of adhesive-to-surface contact, combines to develop superior bonding strength.

PART NUMBER	DIMENSIONS		DURO +/- 5	RATED LOAD (lbs)	NOTES
	DIA.	HT.			
0510026-30-10	0.25	0.125	30	0.034 - 0.068	
0510026-50-10	0.25	0.125	50	0.054 - 0.124	
0510026-70-10	0.25	0.125	70	0.166 - 0.356	
0510101-30-10	0.50	0.25	30	0.2 - 0.5	
0510101-50-10	0.50	0.25	50	0.3 - 0.7	
0510101-70-10	0.50	0.25	70	0.5 - 1.2	
0510111-30-10	0.75	0.375	30	0.5 - 0.9	
0510111-50-10	0.75	0.375	50	1 - 1.8	
0510111-70-10	0.75	0.375	70	1.8 - 3.6	
0510116-30-10	1.00	0.50	30	1 - 2	
0510116-50-10	1.00	0.50	50	2 - 4	
0510116-70-10	1.00	0.50	70	4 - 8	
0510121-30-10	1.25	0.625	30	2 - 4	
0510121-50-10	1.25	0.625	50	5 - 10	
0510121-70-10	1.25	0.625	70	15 - 22	
0510131-30-10	1.50	0.75	30	4 - 7	
0510131-50-10	1.50	0.75	50	7 - 14	
0510131-70-10	1.50	0.75	70	14 - 30	
0510136-30-10	1.75	0.875	30	7 - 12	
0510136-50-10	1.75	0.875	50	12 - 19	
0510136-70-10	1.75	0.875	70	15 - 27	
0510141-30-10	2.00	1.00	30	11 - 16	
0510141-50-10	2.00	1.00	50	17 - 24	
0510141-70-10	2.00	1.00	70	25 - 38	
0510161-30-10	2.25	1.125	30	18 - 26	
0510161-50-10	2.25	1.125	50	31 - 42	
0510161-70-10	2.25	1.125	70	38 - 52	
0510151-30-10	2.50	1.25	30	25 - 35	
0510151-50-10	2.50	1.25	50	45 - 60	
0510151-70-10	2.50	1.25	70	60 - 80	

HEMISPHERES

with Felt Dot



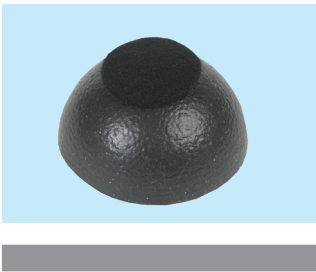
FELT DOT

The soft felt dot works to prevent the Sorbothane® Hemisphere from sticking to the load object without diminishing vibration isolation effectiveness. The felt dot also allows load object to be easily removed.

PART NUMBER	DIMENSIONS		DURO +/- 5	RATED LOAD (lbs)	NOTES
	DIA.	HT.			
0510122-30-10	1.25	0.625	30	2 - 4	
0510122-50-10	1.25	0.625	50	5 - 10	
0510122-70-10	1.25	0.625	70	15 - 22	
0510132-30-10	1.50	0.75	30	4 - 7	
0510132-50-10	1.50	0.75	50	7 - 14	
0510132-70-10	1.50	0.75	70	14 - 30	
0510138-30-10	1.75	0.875	30	7 - 12	
0510138-50-10	1.75	0.875	50	12 - 19	
0510138-70-10	1.75	0.875	70	15 - 27	
0510142-30-10	2.00	1.00	30	11 - 16	
0510142-50-10	2.00	1.00	50	17 - 24	
0510142-70-10	2.00	1.00	70	25 - 38	
0510162-30-10	2.25	1.125	30	18 - 26	
0510162-50-10	2.25	1.125	50	31 - 42	
0510162-70-10	2.25	1.125	70	38 - 42	
0510152-30-10	2.50	1.25	30	24 - 34	
0510152-50-10	2.50	1.25	50	47 - 64	
0510152-70-10	2.50	1.25	70	64 - 84	

HEMISPHERES

with Felt Dot
& PSA



PART NUMBER	DIMENSIONS		DURO +/- 5	RATED LOAD (lbs)	NOTES
	DIA.	HT.			
0510123-30-10	1.25	0.625	30	2 - 4	
0510123-50-10	1.25	0.625	50	5 - 10	
0510123-70-10	1.25	0.625	70	15 - 22	
0510133-30-10	1.50	0.75	30	4 - 7	
0510133-50-10	1.50	0.75	50	7 - 14	
0510133-70-10	1.50	0.75	70	14 - 30	
0510139-30-10	1.75	0.875	30	7 - 12	
0510139-50-10	1.75	0.875	50	12 - 19	
0510139-70-10	1.75	0.875	70	15 - 27	
0510143-30-10	2.00	1.00	30	11 - 16	
0510143-50-10	2.00	1.00	50	17 - 24	
0510143-70-10	2.00	1.00	70	25 - 38	
0510163-30-10	2.25	1.125	30	18 - 26	
0510163-50-10	2.25	1.125	50	31 - 42	
0510163-70-10	2.25	1.125	70	38 - 42	
0510153-30-10	2.50	1.25	30	24 - 34	
0510153-50-10	2.50	1.25	50	47 - 64	
0510153-70-10	2.50	1.25	70	64 - 84	

HEMISPHERES

with Urethane Coating
& PSA



URETHANE COATING

The thin urethane coating helps to make the Sorbothane® Hemisphere easier to handle by reducing the amount of natural tack. The coating also reduces surface friction and adds a layer of protection from elements.

PART NUMBER	DIMENSIONS		DURO +/- 5	RATED LOAD (lbs)	NOTES
	DIA.	HT.			
0510028-30-10	0.25	0.125	30	0.034 - 0.068	
0510028-50-10	0.25	0.125	50	0.054 - 0.124	
0510028-70-10	0.25	0.125	70	0.166 - 0.356	
0510104-30-10	0.50	0.25	30	0.2 - 0.5	
0510104-50-10	0.50	0.25	50	0.3 - 0.7	
0510104-70-10	0.50	0.25	70	0.5 - 1.2	
0510114-30-10	0.75	0.375	30	0.5 - 0.9	
0510114-50-10	0.75	0.375	50	1 - 1.8	
0510114-70-10	0.75	0.375	70	1.8 - 3.6	
0510117-30-10	1.00	0.50	30	1 - 2	
0510117-50-10	1.00	0.50	50	2 - 4	
0510117-70-10	1.00	0.50	70	4 - 8	
0510124-30-10	1.25	0.625	30	2 - 4	
0510124-50-10	1.25	0.625	50	5 - 10	
0510124-70-10	1.25	0.625	70	15 - 22	
0510134-30-10	1.50	0.75	30	4 - 7	
0510134-50-10	1.50	0.75	50	7 - 14	
0510134-70-10	1.50	0.75	70	14 - 30	
0510137-30-10	1.75	0.875	30	7 - 12	
0510137-50-10	1.75	0.875	50	12 - 19	
0510137-70-10	1.75	0.875	70	15 - 27	
0510144-30-10	2.00	1.00	30	11 - 16	
0510144-50-10	2.00	1.00	50	17 - 24	
0510144-70-10	2.00	1.00	70	25 - 38	
0510164-30-10	2.25	1.125	30	18 - 26	
0510164-50-10	2.25	1.125	50	31 - 42	
0510164-70-10	2.25	1.125	70	38 - 52	
0510154-30-10	2.50	1.25	30	25 - 35	
0510154-50-10	2.50	1.25	50	45 - 60	
0510154-70-10	2.50	1.25	70	60 - 80	

Sorbothane® Stud Mounts & Bumpers

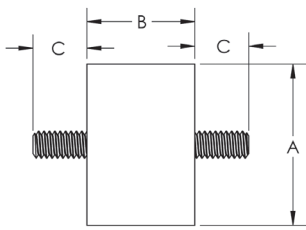
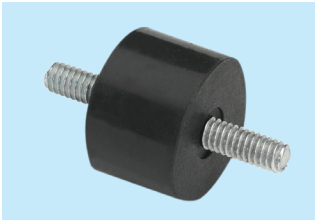


Sorbothane® Stud Mounts, with metal inserts, are available in three standard sizes that utilize both UNC and metric threads. Other UNC and metric threads are available by special order. These Stud Mounts and Bumpers are designed for use in compression.

Use high-quality (thread deforming) lock nuts or double jam nuts to assure your connections do not vibrate loose. High amplitude vibrations require special, heavy-duty inserts. Please consult with the Sorbothane engineering department.

STUD MOUNTS

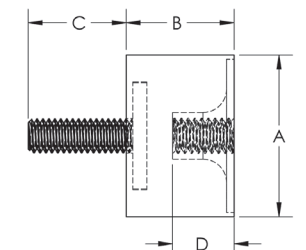
Male-Male



PART NUMBER	STYLE	THREAD	DIMENSIONS			DURO +/- 5	RATED LOAD (lbs)	NOTES
			A	B	C			
0510310-50-10	M-M	#8-32	0.75	0.50	0.47	50	4 - 8	
0510310-70-10	M-M	#8-32	0.75	0.50	0.47	70	8 - 12	
0510330-50-10	M-M	¼-20	1.50	1.00	0.50	50	11 - 16	
0510330-70-10	M-M	¼-20	1.50	1.00	0.50	70	19 - 27	
0510350-50-10	M-M	¼-20	1.75	0.85	0.50	50	20 - 40	
0510350-70-10	M-M	¼-20	1.75	0.85	0.50	70	35 - 75	
METRIC								
0510410-50-10	M-M	M4	19.0	12.7	12.0	50	4 - 8	
0510410-70-10	M-M	M4	19.0	12.7	12.0	70	8 - 12	
0510430-50-10	M-M	M6	38.1	25.4	12.7	50	11 - 15	
0510430-70-10	M-M	M6	38.1	25.4	12.7	70	18 - 26	
0510450-50-10	M-M	M6	44.5	21.6	12.7	50	20 - 40	
0510450-70-10	M-M	M6	44.5	21.6	12.7	70	35 - 75	

STUD MOUNTS

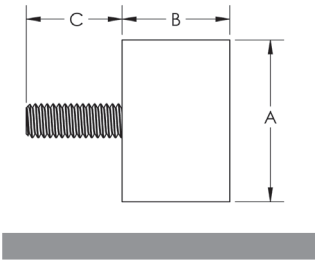
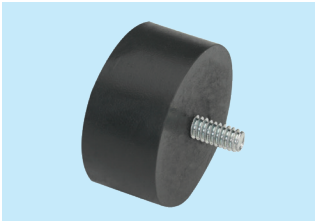
Male-Female



PART NUMBER	STYLE	THREAD	DIMENSIONS				DURO +/- 5	RATED LOAD (lbs)	NOTES
			A	B	C	D			
0510311-50-10	M-F	#8-32	0.75	0.50	0.47	0.25	50	3 - 6	
0510311-70-10	M-F	#8-32	0.75	0.50	0.47	0.25	70	5 - 12	
0510331-50-10	M-F	¼-20	1.50	1.00	0.50	0.35	50	11 - 18	
0510331-70-10	M-F	¼-20	1.50	1.00	0.50	0.35	70	18 - 30	
0510351-50-10	M-F	¼-20	1.75	0.85	0.50	0.35	50	20 - 40	
0510351-70-10	M-F	¼-20	1.75	0.85	0.50	0.35	70	36 - 75	
METRIC									
0510411-50-10	M-F	M4	19.0	12.7	12.0	6.35	50	3 - 6	
0510411-70-10	M-F	M4	19.0	12.7	12.0	6.35	70	5 - 12	
0510431-50-10	M-F	M6	38.1	25.4	12.7	8.9	50	11 - 18	
0510431-70-10	M-F	M6	38.1	25.4	12.7	8.9	70	18 - 29	
0510451-50-10	M-F	M6	44.5	21.6	12.7	8.9	50	20 - 40	
0510451-70-10	M-F	M6	44.5	21.6	12.7	8.9	70	35 - 75	

BUMPERS

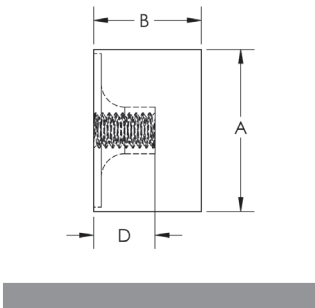
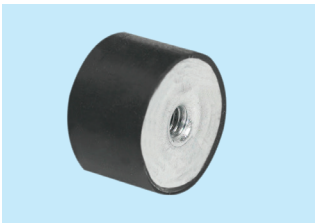
Male



PART NUMBER	STYLE	THREAD	DIMENSIONS			DURO +/- 5	RATED LOAD (lbs)	NOTES
			A	B	C			
0510312-50-10	Male	#8-32	0.75	0.50	0.47	50	2 - 4	
0510312-70-10	Male	#8-32	0.75	0.50	0.47	70	7 - 16	
0510332-50-10	Male	¼-20	1.50	1.00	0.50	50	7 - 14	
0510332-70-10	Male	¼-20	1.50	1.00	0.50	70	30 - 65	
0510352-50-10	Male	¼-20	1.75	0.85	0.50	50	10 - 22	
0510352-70-10	Male	¼-20	1.75	0.85	0.50	70	45 - 100	
METRIC								
0510412-50-10	Male	M4	19.0	12.7	12.0	50	2 - 4	
0510412-70-10	Male	M4	19.0	12.7	12.0	70	7 - 16	
0510432-50-10	Male	M6	38.1	25.4	12.7	50	7 - 14	
0510432-70-10	Male	M6	38.1	25.4	12.7	70	30 - 65	
0510452-50-10	Male	M6	44.5	21.6	12.7	50	10 - 22	
0510452-70-10	Male	M6	44.5	21.6	12.7	70	45 - 100	

BUMPERS

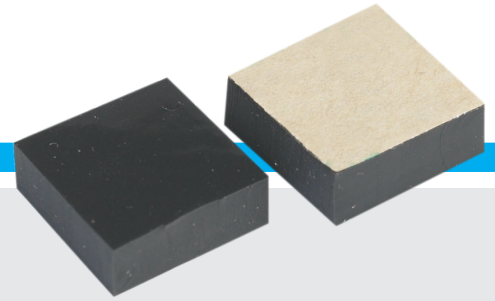
Female



PART NUMBER	STYLE	THREAD	DIMENSIONS			DURO +/- 5	RATED LOAD (lbs)	NOTES
			A	B	D			
0510313-50-10	Female	#8-32	0.75	0.50	0.25	50	3 - 5	
0510313-70-10	Female	#8-32	0.75	0.50	0.25	70	6 - 8	
0510333-50-10	Female	¼-20	1.50	1.00	0.35	50	11 - 18	
0510333-70-10	Female	¼-20	1.50	1.00	0.35	70	18 - 27	
0510353-50-10	Female	¼-20	1.75	0.85	0.35	50	20 - 40	
0510353-70-10	Female	¼-20	1.75	0.85	0.35	70	35 - 75	
METRIC								
0510413-50-10	Female	M4	19.0	12.7	6.35	50	3 - 5	
0510413-70-10	Female	M4	19.0	12.7	6.35	70	6 - 8	
0510433-50-10	Female	M6	38.1	25.4	8.9	50	11 - 18	
0510433-70-10	Female	M6	38.1	25.4	8.9	70	18 - 26	
0510453-50-10	Female	M6	44.5	21.6	8.9	50	20 - 40	
0510453-70-10	Female	M6	44.5	21.6	8.9	70	35 - 75	

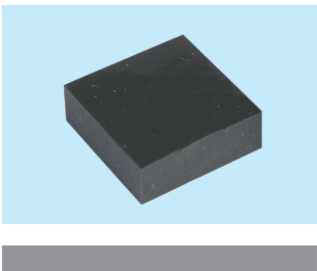
Sorbothane® Isolation Pads

Sorbothane® Isolation Pads are an off-the-shelf solution to reduce your shock and vibration problem offering a wide range of sizes to choose from.



ISOLATION PADS

Square

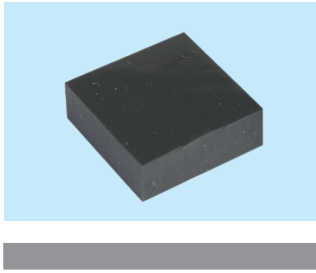


PART NUMBER	DIMENSIONS	DURO +/- 5	RATED LOAD (lbs)	NOTES
0510610-30-10	0.50 x 0.50 x 0.10	30	1 - 2	
0510610-50-10	0.50 x 0.50 x 0.10	50	3 - 6	
0510610-70-10	0.50 x 0.50 x 0.10	70	10 - 25	
0510612-30-10	0.50 x 0.50 x 0.125	30	0.7 - 1.5	
0510612-50-10	0.50 x 0.50 x 0.125	50	2.0 - 4.7	
0510612-70-10	0.50 x 0.50 x 0.125	70	5 - 14	
0510618-30-10	0.50 x 0.50 x 0.188	30	0.5 - 1	
0510618-50-10	0.50 x 0.50 x 0.188	50	1.5 - 2.5	
0510618-70-10	0.50 x 0.50 x 0.188	70	5 - 14	
0510625-30-10	0.50 x 0.50 x 0.25	30	0.4 - 0.8	
0510625-50-10	0.50 x 0.50 x 0.25	50	1 - 2	
0510625-70-10	0.50 x 0.50 x 0.25	70	4 - 10	
0510712-30-10	0.75 x 0.75 x 0.125	30	3 - 6	
0510712-50-10	0.75 x 0.75 x 0.125	50	9 - 19	
0510712-70-10	0.75 x 0.75 x 0.125	70	37 - 90	
0510718-30-10	0.75 x 0.75 x 0.188	30	1.5 - 3.5	
0510718-50-10	0.75 x 0.75 x 0.188	50	5 - 10	
0510718-70-10	0.75 x 0.75 x 0.188	70	20 - 50	
0510725-30-10	0.75 x 0.75 x 0.250	30	1 - 2.5	
0510725-50-10	0.75 x 0.75 x 0.250	50	3.5 - 7.5	
0510725-70-10	0.75 x 0.75 x 0.250	70	15 - 35	
0511012-30-10	1.00 x 1.00 x 0.125	30	9 - 18	
0511012-50-10	1.00 x 1.00 x 0.125	50	25 - 55	
0511012-70-10	1.00 x 1.00 x 0.125	70	100 - 270	
0511018-30-10	1.00 x 1.00 x 0.188	30	4.5 - 9.5	
0511018-50-10	1.00 x 1.00 x 0.188	50	13 - 28	
0511018-70-10	1.00 x 1.00 x 0.188	70	55 - 135	

continued on the next page

ISOLATION PADS

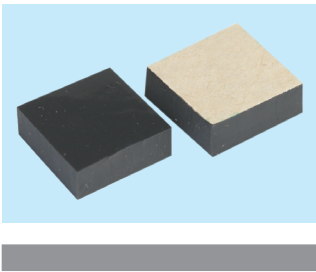
Square *continued*



PART NUMBER	DIMENSIONS	DURO +/- 5	RATED LOAD (lbs)	NOTES
0511025-30-10	1.00 x 1.00 x 0.250	30	3 - 6	
0511025-50-10	1.00 x 1.00 x 0.250	50	9 - 18	
0511025-70-10	1.00 x 1.00 x 0.250	70	36 - 90	
0511037-30-10	1.00 x 1.00 x 0.375	30	1.7 - 4	
0511037-50-10	1.00 x 1.00 x 0.375	50	5 - 12	
0511037-70-10	1.00 x 1.00 x 0.375	70	22.25 - 56.5	
0511525-30-10	1.50 x 1.50 x 0.250	30	11 - 26	
0511525-50-10	1.50 x 1.50 x 0.250	50	33.4 - 78	
0511525-70-10	1.50 x 1.50 x 0.250	70	140 - 371	
0511537-30-10	1.50 x 1.50 x 0.375	30	6 - 14	
0511537-50-10	1.50 x 1.50 x 0.375	50	18.25 - 42.5	
0511537-70-10	1.50 x 1.50 x 0.375	70	79.5 - 202.5	
0511550-30-10	1.50 x 1.50 x 0.500	30	4.3 - 10	
0511550-50-10	1.50 x 1.50 x 0.500	50	13 - 30	
0511550-70-10	1.50 x 1.50 x 0.500	70	56.5 - 143	

ISOLATION PADS

with PSA

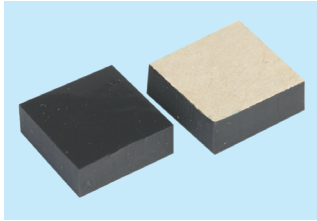


PART NUMBER	DIMENSIONS	DURO +/- 5	RATED LOAD (lbs)	NOTES
0510611-30-10	0.50 x 0.50 x 0.10	30	1 - 2	
0510611-50-10	0.50 x 0.50 x 0.10	50	3 - 6	
0510611-70-10	0.50 x 0.50 x 0.10	70	10 - 25	
0510613-30-10	0.50 x 0.50 x 0.125	30	0.7 - 1.5	
0510613-50-10	0.50 x 0.50 x 0.125	50	2.0 - 4.7	
0510613-70-10	0.50 x 0.50 x 0.125	70	5 - 14	
0510619-30-10	0.50 x 0.50 x 0.188	30	0.5 - 1	
0510619-50-10	0.50 x 0.50 x 0.188	50	1.5 - 2.5	
0510619-70-10	0.50 x 0.50 x 0.188	70	5 - 14	
0510626-30-10	0.50 x 0.50 x 0.25	30	0.4 - 0.8	
0510626-50-10	0.50 x 0.50 x 0.25	50	1 - 2	
0510626-70-10	0.50 x 0.50 x 0.25	70	4 - 10	
0510713-30-10	0.75 x 0.75 x 0.125	30	3 - 6	
0510713-50-10	0.75 x 0.75 x 0.125	50	9 - 19	
0510713-70-10	0.75 x 0.75 x 0.125	70	37 - 90	
0510719-30-10	0.75 x 0.75 x 0.188	30	1.5 - 3.5	
0510719-50-10	0.75 x 0.75 x 0.188	50	5 - 10	
0510719-70-10	0.75 x 0.75 x 0.188	70	20 - 50	

continued on the next page

ISOLATION PADS

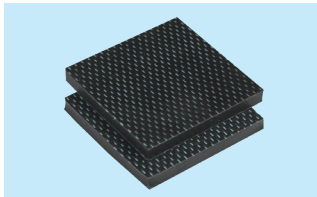
with PSA *continued*



PART NUMBER	DIMENSIONS	DURO +/- 5	RATED LOAD (lbs)	NOTES
0510726-30-10	0.75 x 0.75 x 0.250	30	1 - 2.5	
0510726-50-10	0.75 x 0.75 x 0.250	50	3.5 - 7.5	
0510726-70-10	0.75 x 0.75 x 0.250	70	15 - 35	
0511013-30-10	1.00 x 1.00 x 0.125	30	9 - 18	
0511013-50-10	1.00 x 1.00 x 0.125	50	25 - 55	
0511013-70-10	1.00 x 1.00 x 0.125	70	110 - 270	
0511019-30-10	1.00 x 1.00 x 0.188	30	4.5 - 9.5	
0511019-50-10	1.00 x 1.00 x 0.188	50	13 - 28	
0511019-70-10	1.00 x 1.00 x 0.188	70	55 - 135	
0511026-30-10	1.00 x 1.00 x 0.250	30	3 - 6	
0511026-50-10	1.00 x 1.00 x 0.250	50	9 - 18	
0511026-70-10	1.00 x 1.00 x 0.250	70	36 - 90	
0511038-30-10	1.00 x 1.00 x 0.375	30	1.7 - 4	
0511038-50-10	1.00 x 1.00 x 0.375	50	5 - 12	
0511038-70-10	1.00 x 1.00 x 0.375	70	22.25 - 56.5	

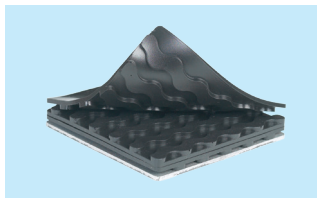
ISOLATION PADS

with Fabric Top & Bottom



PART NUMBER	DIMENSIONS	DURO +/- 5	RATED LOAD (lbs)	NOTES
0510425-30-10	2.5 x 2.5 x 0.25	30	NA	
0510425-50-10	2.5 x 2.5 x 0.25	50	NA	
0510425-70-10	2.5 x 2.5 x 0.25	70	NA	

ISOLATION PADS INTERLOCKING



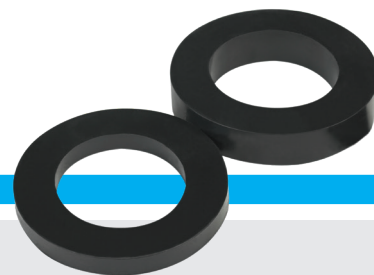
With Six Lines

PART NUMBER	DIMENSIONS	DURO +/- 5	RATED LOAD (lbs)	NOTES
0510581-30-10	4.0 x 4.0 x 0.20	30	NA	
0510581-50-10	4.0 x 4.0 x 0.20	50	NA	
0510581-70-10	4.0 x 4.0 x 0.20	70	NA	

With Five Lines

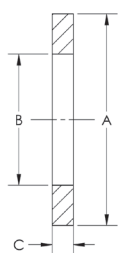
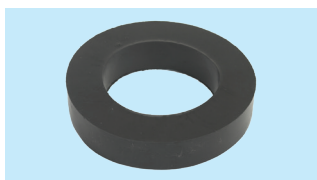
PART NUMBER	DIMENSIONS	DURO +/- 5	RATED LOAD (lbs)	NOTES
0510582-30-10	4.0 x 4.0 x 0.20	30	NA	
0510582-50-10	4.0 x 4.0 x 0.20	50	NA	
0510582-70-10	4.0 x 4.0 x 0.20	70	NA	

Sorbothane® Isolation Rings



Sorbothane® Isolation Rings are ideal for applications that require shock protection or a low system natural frequency. Typical applications include shipping sensitive hardware, optics, and electronics.

ISOLATION RINGS

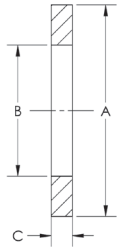
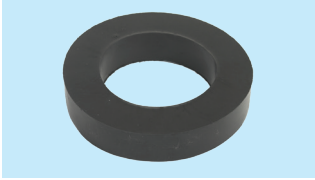


PART NUMBER	DIMENSIONS			DURO +/- 5	RATED LOAD (lbs)	NOTES
	A OD.	B ID.	C HT.			
0510802-30-10	1.75	0.63	0.25	30	7 - 15	
0510802-50-10	1.75	0.63	0.25	50	20 - 45	
0510802-70-10	1.75	0.63	0.25	70	90 - 215	
0510823-30-10	2.00	0.50	0.375	30	8 - 18	
0510823-50-10	2.00	0.50	0.375	50	24 - 55	
0510823-70-10	2.00	0.50	0.375	70	105 - 260	
0510825-30-10	2.00	0.50	0.50	30	6 - 13	
0510825-50-10	2.00	0.50	0.50	50	17 - 39	
0510825-70-10	2.00	0.50	0.50	70	75 - 185	
0510845-30-10	2.50	0.50	0.50	30	13 - 29	
0510845-50-10	2.50	0.50	0.50	50	38 - 88	
0510845-70-10	2.50	0.50	0.50	70	170 - 420	
0510865-30-10	3.00	1.00	0.50	30	17 - 39	
0510865-50-10	3.00	1.00	0.50	50	51 - 118	
0510865-70-10	3.00	1.00	0.50	70	220 - 560	
0510867-30-10	3.00	1.00	0.75	30	11 - 24	
0510867-50-10	3.00	1.00	0.75	50	32 - 74	
0510867-70-10	3.00	1.00	0.75	70	140 - 356	
0510882-30-10	3.00	2.00	0.25	30	11 - 24	
0510882-50-10	3.00	2.00	0.25	50	32 - 74	
0510882-70-10	3.00	2.00	0.25	70	139 - 350	
0510885-30-10	3.00	2.00	0.50	30	5 - 12	
0510885-50-10	3.00	2.00	0.50	50	16 - 37	
0510885-70-10	3.00	2.00	0.50	70	70 - 175	
0510907-30-10	4.00	1.00	0.75	30	32 - 74	
0510907-50-10	4.00	1.00	0.75	50	96 - 222	
0510907-70-10	4.00	1.00	0.75	70	420 - 1000	
0510909-30-10	4.00	1.00	1.00	30	25 - 50	
0510909-50-10	4.00	1.00	1.00	50	70 - 150	
0510909-70-10	4.00	1.00	1.00	70	300 - 750	

continued on the next page

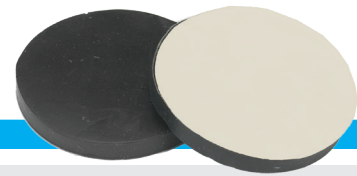
ISOLATION RINGS

continued



PART NUMBER	DIMENSIONS			DURO +/- 5	RATED LOAD (lbs)	NOTES
	A OD.	B ID.	C HT.			
0510925-30-10	4.00	2.00	0.50	30	26 - 59	
0510925-50-10	4.00	2.00	0.50	50	80 - 175	
0510925-70-10	4.00	2.00	0.50	70	340 - 840	
0510929-30-10	4.00	2.00	1.00	30	13 - 29	
0510929-50-10	4.00	2.00	1.00	50	40 - 85	
0510929-70-10	4.00	2.00	1.00	70	170 - 420	
0510942-30-10	4.00	3.00	0.25	30	15 - 34	
0510942-50-10	4.00	3.00	0.25	50	45 - 100	
0510942-70-10	4.00	3.00	0.25	70	200 - 490	
0510945-30-10	4.00	3.00	0.50	30	7.5 - 17	
0510945-50-10	4.00	3.00	0.50	50	23 - 50	
0510945-70-10	4.00	3.00	0.50	70	100 - 240	
0572155-30-10	5.00	3.10	0.50	30	31 - 70	
0572155-50-10	5.00	3.10	0.50	50	92 - 210	
0572155-70-10	5.00	3.10	0.50	70	400 - 1000	
0572157-30-10	5.00	3.10	0.75	30	20 - 45	
0572157-50-10	5.00	3.10	0.75	50	60 - 135	
0572157-70-10	5.00	3.10	0.75	70	260 - 650	
0572160-30-10	5.00	3.10	1.00	30	16 - 36	
0572160-50-10	5.00	3.10	1.00	50	50 - 110	
0572160-70-10	5.00	3.10	1.00	70	210 - 520	
0572175-30-10	5.00	2.50	0.50	30	55 - 125	
0572175-50-10	5.00	2.50	0.50	50	165 - 375	
0572175-70-10	5.00	2.50	0.50	70	720 - 1800	
0572177-30-10	5.00	2.50	0.75	30	35 - 70	
0572177-50-10	5.00	2.50	0.75	50	100 - 200	
0572177-70-10	5.00	2.50	0.75	70	410 - 1050	
0572170-30-10	5.00	2.50	1.00	30	25 - 50	
0572170-50-10	5.00	2.50	1.00	50	75 - 160	
0572170-70-10	5.00	2.50	1.00	70	310 - 780	
0572185-30-10	5.00	2.00	0.50	30	85 - 185	
0572185-50-10	5.00	2.00	0.50	50	245 - 570	
0572185-70-10	5.00	2.00	0.50	70	1075 - 2720	
0572187-30-10	5.00	2.00	0.75	30	45 - 100	
0572187-50-10	5.00	2.00	0.75	50	135 - 310	
0572187-70-10	5.00	2.00	0.75	70	590 - 1480	
0572180-30-10	5.00	2.00	1.00	30	32 - 70	
0572180-50-10	5.00	2.00	1.00	50	95 - 215	
0572180-70-10	5.00	2.00	1.00	70	420 - 1040	

Sorbothane® Isolation Discs



Sorbothane® Isolation Discs' universal circular shape and full surface contact support an extensive range of loads.

ISOLATION DISCS

Round



PART NUMBER	DIMENSIONS	DURO +/- 5	RATED LOAD (lbs)	NOTES
0531025-30-10	0.25 x 1.00 Dia.	30	2.5 - 4.5	
0531025-50-10	0.25 x 1.00 Dia.	50	6.6 - 14.5	
0531025-70-10	0.25 x 1.00 Dia.	70	30 - 65	
0531050-30-10	0.50 x 1.00 Dia.	30	1 - 2.4	
0531050-50-10	0.50 x 1.00 Dia.	50	3.5 - 7	
0531050-70-10	0.50 x 1.00 Dia.	70	14 - 35	
0531525-30-10	0.25 x 1.50 Dia.	30	9 - 20	
0531525-50-10	0.25 x 1.50 Dia.	50	27 - 60	
0531525-70-10	0.25 x 1.50 Dia.	70	120 - 180	
0531550-30-10	0.50 x 1.50 Dia.	30	3.5 - 7.5	
0531550-50-10	0.50 x 1.50 Dia.	50	10 - 23	
0531550-70-10	0.50 x 1.50 Dia.	70	45 - 110	
0510435-30-10	0.25 x 2.25 Dia.	30	40 - 90	
0510435-50-10	0.25 x 2.25 Dia.	50	120 - 270	
0510435-70-10	0.25 x 2.25 Dia.	70	530 - 1320	
0532350-30-10	0.50 x 2.25 Dia.	30	13 - 29	
0532350-50-10	0.50 x 2.25 Dia.	50	40 - 85	
0532350-70-10	0.50 x 2.25 Dia.	70	170 - 415	
0532525-30-10	0.25 x 2.50 Dia.	30	60 - 130	
0532525-50-10	0.25 x 2.50 Dia.	50	180 - 400	
0532525-70-10	0.25 x 2.50 Dia.	70	790 - 1980	
0532550-30-10	0.50 x 2.50 Dia.	30	19 - 42	
0532550-50-10	0.50 x 2.50 Dia.	50	55 - 125	
0532550-70-10	0.50 x 2.50 Dia.	70	240 - 600	
0533025-30-10	0.25 x 3.00 Dia.	30	125 - 275	
0533025-50-10	0.25 x 3.00 Dia.	50	370 - 840	
0533025-70-10	0.25 x 3.00 Dia.	70	920 - 2000	

continued on the next page

ISOLATION DISCS

Round *continued*



PART NUMBER	DIMENSIONS	DURO +/- 5	RATED LOAD (lbs)	NOTES
0533050-30-10	0.50 x 3.00 Dia.	30	35 - 80	
0533050-50-10	0.50 x 3.00 Dia.	50	105 - 240	
0533050-70-10	0.50 x 3.00 Dia.	70	460 - 1160	
0534025-30-10	0.25 x 4.00 Dia.	30	375 - 865	
0534025-50-10	0.25 x 4.00 Dia.	50	1120 - 2600	
0534025-70-10	0.25 x 4.00 Dia.	70	4900 - 12,440	
0534050-30-10	0.50 x 4.00 Dia.	30	100 - 235	
0534050-50-10	0.50 x 4.00 Dia.	50	305 - 712	
0534050-70-10	0.50 x 4.00 Dia.	70	1,335 - 3,390	
0534075-30-10	0.75 x 4.00 Dia.	30	52 - 120	
0534075-50-10	0.75 x 4.00 Dia.	50	155 - 360	
0534075-70-10	0.75 x 4.00 Dia.	70	675 - 1700	
0534100-30-10	1.00 x 4.00 Dia.	30	34 - 79	
0534100-50-10	1.00 x 4.00 Dia.	50	102 - 237	
0534100-70-10	1.00 x 4.00 Dia.	70	445 - 1130	

ISOLATION DISCS

with PSA



PART NUMBER	DIMENSIONS	DURO +/- 5	RATED LOAD (lbs)	NOTES
0531026-30-10	0.25 x 1.00 Dia.	30	2.5 - 4.5	
0531026-50-10	0.25 x 1.00 Dia.	50	6.5 - 14.5	
0531026-70-10	0.25 x 1.00 Dia.	70	30 - 65	
0531051-30-10	0.50 x 1.00 Dia.	30	1 - 2.4	
0531051-50-10	0.50 x 1.00 Dia.	50	3.5 - 7	
0531051-70-10	0.50 x 1.00 Dia.	70	14 - 35	
0531526-30-10	0.25 x 1.50 Dia.	30	9 - 20	
0531526-50-10	0.25 x 1.50 Dia.	50	27 - 60	
0531526-70-10	0.25 x 1.50 Dia.	70	120 - 280	
0531551-30-10	0.50 x 1.50 Dia.	30	3.5 - 7.5	
0531551-50-10	0.50 x 1.50 Dia.	50	10 - 23	
0531551-70-10	0.50 x 1.50 Dia.	70	45 - 110	
0510436-30-10	0.25 x 2.25 Dia.	30	40 - 90	
0510436-50-10	0.25 x 2.25 Dia.	50	120 - 270	
0510436-70-10	0.25 x 2.25 Dia.	70	530 - 1320	
0532351-30-10	0.50 x 2.25 Dia.	30	13 - 29	
0532351-50-10	0.50 x 2.25 Dia.	50	40 - 85	
0532351-70-10	0.50 x 2.25 Dia.	70	170 - 415	

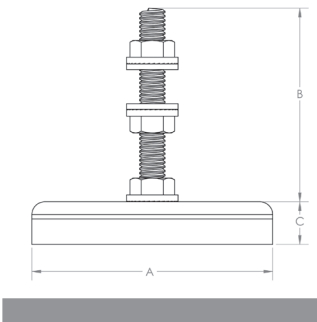
Anti-Vibration Leveling Mounts

Sorbothane® Anti-Vibration Leveling Mounts provide both leveling and vibration isolation. They are designed to handle a wide range of loads and varying environmental conditions. Major benefits of the mounts include their ability to isolate a system from unwanted vibration and resonance by lowering the natural frequency of the system.



The dual urethane compounds compliment each other to provide a high degree of vibration and shock damping. These mounts provide a quick, cost-effective way to dissipate unwanted energy and correct for machine and floor leveling problems.

ANTI-VIBRATION LEVELING MOUNTS



PART NUMBER	THREAD (UNC)	DIMENSIONS			DURO +/- 5	RATED LOAD (lbs)	NOTES
		A	B	C			
0510510-70-10	¼ - 20	2.00	1.875	0.75	70	75 - 185	
0510505-70-10	¼ - 20	2.25	1.875	0.75	70	115 - 285	
0510515-70-10	¼ - 20	2.50	1.875	0.62	70	195 - 485	
0510520-70-10	⅜ - 16	2.50	2.875	0.62	70	195 - 485	
0510530-70-10	⅜ - 16	3.50	2.875	0.88	70	370 - 925	
0510525-70-10	⅜ - 16	3.50	2.875	0.62	70	820 - 2070	



FAMILY Relationships built on mutual respect and teamwork

CUSTOMER PARTNERS Listen first – then collaborate to engineer the best solution

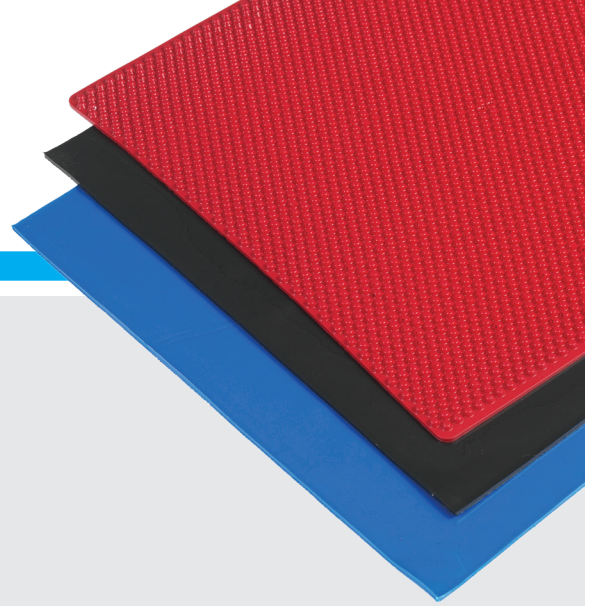
QUALITY Excellence – delivered across all platforms

INTEGRITY Adherence to a code of moral values and methods

SERVICE Striving to meet and exceed all expectations



Sorbothane® Sheet Stock



CUSTOMIZING SHEET STOCK

▶ Die Cutting

Sheet Stock up to 0.375-inch thick, with or without PSA can be die cut at additional cost. Die cut materials 0.25-inch and thicker will have a concave edge. Consult factory on costs.

▶ Water Jet Cutting

Sheet Stock of any thickness can be water jet cut. Water jet cut materials will have a clean edge. Consult factory on costs.

▶ Gaskets

Sorbothane® is a popular material for gaskets because of its chemical resistance, conformability to irregular surfaces, low creep and reusability. Its natural tackiness makes it easy to install.

Gaskets can be knife-cut, scissor-cut, die cut, molded or water jet cut.

▶ X-Tra Flex Sheet

X-Tra Flex Sheet is molded with hemispherical bumps. The hemispheres permit the material to flex more easily and allow for soft deformation under load. Overall sheet thickness is approximately 0.185-inch. The hemispheres are approximately 0.09 high and 0.12 diameter. X-Tra Flex sheets are easier to apply to curved and irregular surfaces and provide a softer spring rate.

▶ Special Sizes, Colors and Thicknesses

The factory can pour special shapes, colors and thicknesses.

Available colors include:



BLACK



BLUE



DARK BLUE



RED



ORANGE



GREEN



YELLOW



GRAY

Please contact factory for pricing & minimums

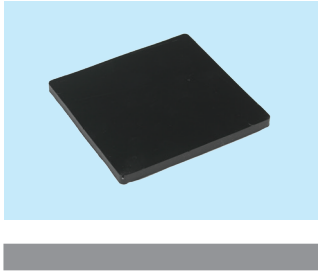
Sheet Stock for Vibration Applications

In designing your own vibration mounts from sheet stock keep the following in mind:

- **More is not better.** A large, lightly loaded sheet will have a high spring rate and will not deflect enough to provide good isolation. Over compression will lead to short service life. The proper compression range is 3 to 20 percent depending on the “Shape Factor.” Shape factor is the ratio of contact surface (one side) divided by perimeter area. See page 5 for calculation of shape factors.
- **Geometry matters.** Small circular pieces and rings “bulge” better than squares and rectangles. “Bulgeability” makes for better isolation. Use many small discs rather than a few large rectangles for best vibration isolation performance.
- **Thickness matters.** The thicker the sheet, the lower the natural frequency. You need a sheet at least one-inch thick to get your natural frequency down to 10 Hertz. (10 Hertz is your target natural frequency for a 900 RPM motor.)
- **Do not “bolt through” your Sorbothane® sheet.** The bolt will carry the vibration to the base. Use the natural tackiness of Sorbothane®, or apply adhesives to glue the Sorbothane® to metal plates on both sides, or consider a custom design with molded-in stud mounts.
- **Use vibration-rated connections.** Where bolted connections are used, use high-quality (thread deforming) lock nuts or doubled jam nuts to prevent connections from vibrating loose.

SMALL SHEET STOCK

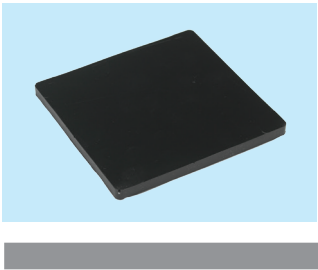
4" x 4"



PART NUMBER	DIMENSIONS	THICKNESS TOLERANCE	DURO +/- 5	NOTES
0204010-30-10	4 x 4 x 0.10	±0.015	30	
0204010-50-10	4 x 4 x 0.10	±0.015	50	
0204010-70-10	4 x 4 x 0.10	±0.015	70	
0204012-30-10	4 x 4 x 0.125	±0.020	30	
0204012-50-10	4 x 4 x 0.125	±0.020	50	
0204012-70-10	4 x 4 x 0.125	±0.020	70	
0204018-30-10	4 x 4 x 0.188	±0.020	30	
0204018-50-10	4 x 4 x 0.188	±0.020	50	
0204018-70-10	4 x 4 x 0.188	±0.020	70	
0204025-30-10	4 x 4 x 0.25	±0.025	30	
0204025-50-10	4 x 4 x 0.25	±0.025	50	
0204025-70-10	4 x 4 x 0.25	±0.025	70	
0204037-30-10	4 x 4 x 0.375	±0.025	30	
0204037-50-10	4 x 4 x 0.375	±0.025	50	
0204037-70-10	4 x 4 x 0.375	±0.025	70	
0204050-30-10	4 x 4 x 0.50	±0.035	30	
0204050-50-10	4 x 4 x 0.50	±0.035	50	
0204050-70-10	4 x 4 x 0.50	±0.035	70	

SMALL SHEET STOCK

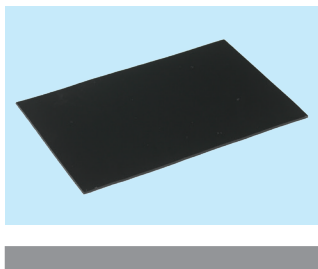
5" x 5"



PART NUMBER	DIMENSIONS	THICKNESS TOLERANCE	DURO +/- 5	NOTES
0205025-30-10	5 x 5 x 0.25	±0.025	30	
0205025-50-10	5 x 5 x 0.25	±0.025	50	
0205025-70-10	5 x 5 x 0.25	±0.025	70	
0205050-30-10	5 x 5 x 0.50	±0.035	30	
0205050-50-10	5 x 5 x 0.50	±0.035	50	
0205050-70-10	5 x 5 x 0.50	±0.035	70	

SHEET STOCK

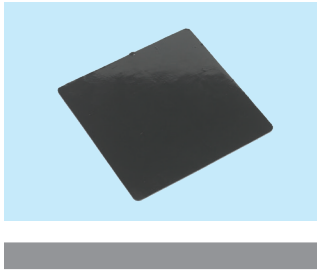
4" x 6"



PART NUMBER	DIMENSIONS	THICKNESS TOLERANCE	DURO +/- 5	NOTES
0208040-40-10	4 x 6 x 0.040	±0.007	40	
0208040-50-10	4 x 6 x 0.040	±0.007	50	
0208040-60-10	4 x 6 x 0.040	±0.007	60	
0208040-70-10	4 x 6 x 0.040	±0.007	70	
0208060-40-10	4 x 6 x 0.060	±0.007	40	
0208060-50-10	4 x 6 x 0.060	±0.007	50	
0208060-60-10	4 x 6 x 0.060	±0.007	60	
0208060-70-10	4 x 6 x 0.060	±0.007	70	

SHEET STOCK

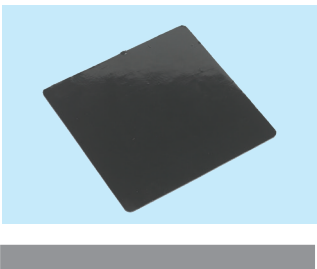
6" x 6"



PART NUMBER	DIMENSIONS	THICKNESS TOLERANCE	DURO +/- 5	NOTES
0206080-40-10	6 x 6 x 0.080	±0.015	40	
0206080-50-10	6 x 6 x 0.080	±0.015	50	
0206080-60-10	6 x 6 x 0.080	±0.015	60	
0206080-70-10	6 x 6 x 0.080	±0.015	70	
0266025-30-10	6 x 6 x 0.25	±0.025	30	
0266025-40-10	6 x 6 x 0.25	±0.025	40	
0266025-50-10	6 x 6 x 0.25	±0.025	50	
0266025-60-10	6 x 6 x 0.25	±0.025	60	
0266025-70-10	6 x 6 x 0.25	±0.025	70	
0266050-30-10	6 x 6 x 0.50	±0.035	30	
0266050-40-10	6 x 6 x 0.50	±0.035	40	
0266050-50-10	6 x 6 x 0.50	±0.035	50	
0266050-60-10	6 x 6 x 0.50	±0.035	60	
0266050-70-10	6 x 6 x 0.50	±0.035	70	
0266075-30-10	6 x 6 x 0.75	±0.040	30	
0266075-40-10	6 x 6 x 0.75	±0.040	40	
0266075-50-10	6 x 6 x 0.75	±0.040	50	
0266075-60-10	6 x 6 x 0.75	±0.040	60	
0266075-70-10	6 x 6 x 0.75	±0.040	70	
0266100-30-10	6 x 6 x 1.00	±0.060	30	
0266100-40-10	6 x 6 x 1.00	±0.060	40	
0266100-50-10	6 x 6 x 1.00	±0.060	50	
0266100-60-10	6 x 6 x 1.00	±0.060	60	
0266100-70-10	6 x 6 x 1.00	±0.060	70	

SHEET STOCK

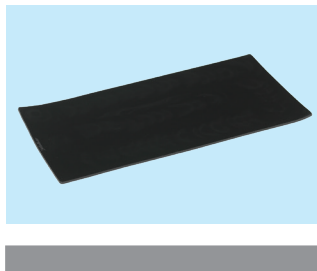
7" x 7"



PART NUMBER	DIMENSIONS	THICKNESS TOLERANCE	DURO +/- 5	NOTES
0208047-40-10	7 x 7 x 0.040	±0.007	40	
0208047-50-10	7 x 7 x 0.040	±0.007	50	
0208047-60-10	7 x 7 x 0.040	±0.007	60	
0208047-70-10	7 x 7 x 0.040	±0.007	70	
0277060-40-10	7 x 7 x 0.060	±0.007	40	
0277060-50-10	7 x 7 x 0.060	±0.007	50	
0277060-60-10	7 x 7 x 0.060	±0.007	60	
0277060-70-10	7 x 7 x 0.060	±0.007	70	

SHEET STOCK

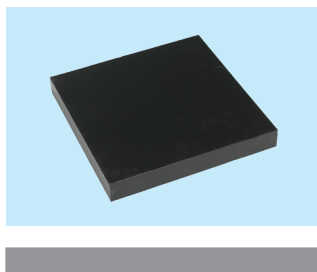
6" x 12"



PART NUMBER	DIMENSIONS	THICKNESS TOLERANCE	DURO +/- 5	NOTES
0206109-40-10	6 x 12 x 0.100	±0.015	40	
0206109-50-10	6 x 12 x 0.100	±0.015	50	
0206109-60-10	6 x 12 x 0.100	±0.015	60	
0206109-70-10	6 x 12 x 0.100	±0.015	70	
0206111-40-10	6 x 12 x 0.125	±0.020	40	
0206111-50-10	6 x 12 x 0.125	±0.020	50	
0206111-60-10	6 x 12 x 0.125	±0.020	60	
0206111-70-10	6 x 12 x 0.125	±0.020	70	
0206115-30-10	6 x 12 x 0.156	±0.020	30	
0206115-40-10	6 x 12 x 0.156	±0.020	40	
0206115-50-10	6 x 12 x 0.156	±0.020	50	
0206115-60-10	6 x 12 x 0.156	±0.020	60	
0206115-70-10	6 x 12 x 0.156	±0.020	70	
0206118-30-10	6 x 12 x 0.188	±0.020	30	
0206118-40-10	6 x 12 x 0.188	±0.020	40	
0206118-50-10	6 x 12 x 0.188	±0.020	50	
0206118-60-10	6 x 12 x 0.188	±0.020	60	
0206118-70-10	6 x 12 x 0.188	±0.020	70	
0206125-30-10	6 x 12 x 0.250	±0.025	30	
0206125-40-10	6 x 12 x 0.250	±0.025	40	
0206125-50-10	6 x 12 x 0.250	±0.025	50	
0206125-60-10	6 x 12 x 0.250	±0.025	60	
0206125-70-10	6 x 12 x 0.250	±0.025	70	

SHEET STOCK

12" x 12"

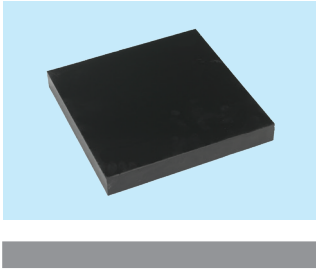


PART NUMBER	DIMENSIONS	THICKNESS TOLERANCE	DURO +/- 5	NOTES
0212010-40-10	12 x 12 x 0.100	±0.015	40	
0212010-50-10	12 x 12 x 0.100	±0.015	50	
0212010-60-10	12 x 12 x 0.100	±0.015	60	
0212010-70-10	12 x 12 x 0.100	±0.015	70	
0212012-40-10	12 x 12 x 0.125	±0.020	40	
0212012-50-10	12 x 12 x 0.125	±0.020	50	
0212012-60-10	12 x 12 x 0.125	±0.020	60	
0212012-70-10	12 x 12 x 0.125	±0.020	70	

continued on the next page

SHEET STOCK

12" x 12"

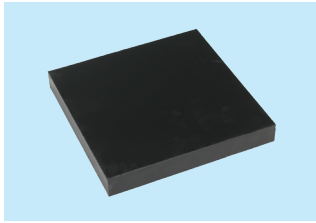


PART NUMBER	DIMENSIONS	THICKNESS TOLERANCE	DURO +/- 5	NOTES
0212018-30-10	12 x 12 x 0.188	±0.020	30	
0212018-40-10	12 x 12 x 0.188	±0.020	40	
0212018-50-10	12 x 12 x 0.188	±0.020	50	
0212018-60-10	12 x 12 x 0.188	±0.020	60	
0212018-70-10	12 x 12 x 0.188	±0.020	70	
0212025-30-10	12 x 12 x 0.250	±0.025	30	
0212025-40-10	12 x 12 x 0.250	±0.025	40	
0212025-50-10	12 x 12 x 0.250	±0.025	50	
0212025-60-10	12 x 12 x 0.250	±0.025	60	
0212025-70-10	12 x 12 x 0.250	±0.025	70	
0212031-30-10	12 x 12 x 0.312	±0.025	30	
0212031-40-10	12 x 12 x 0.312	±0.025	40	
0212031-50-10	12 x 12 x 0.312	±0.025	50	
0212031-60-10	12 x 12 x 0.312	±0.025	60	
0212031-70-10	12 x 12 x 0.312	±0.025	70	
0212037-30-10	12 x 12 x 0.375	±0.025	30	
0212037-40-10	12 x 12 x 0.375	±0.025	40	
0212037-50-10	12 x 12 x 0.375	±0.025	50	
0212037-60-10	12 x 12 x 0.375	±0.025	60	
0212037-70-10	12 x 12 x 0.375	±0.025	70	
0212050-30-10	12 x 12 x 0.500	±0.035	30	
0212050-40-10	12 x 12 x 0.500	±0.035	40	
0212050-50-10	12 x 12 x 0.500	±0.035	50	
0212050-60-10	12 x 12 x 0.500	±0.035	60	
0212050-70-10	12 x 12 x 0.500	±0.035	70	
0212062-30-10	12 x 12 x 0.625	±0.035	30	
0212062-40-10	12 x 12 x 0.625	±0.035	40	
0212062-50-10	12 x 12 x 0.625	±0.035	50	
0212062-60-10	12 x 12 x 0.625	±0.035	60	
0212062-70-10	12 x 12 x 0.625	±0.035	70	
0212075-30-10	12 x 12 x 0.750	±0.040	30	
0212075-40-10	12 x 12 x 0.750	±0.040	40	
0212075-50-10	12 x 12 x 0.750	±0.040	50	
0212075-60-10	12 x 12 x 0.750	±0.040	60	
0212075-70-10	12 x 12 x 0.750	±0.040	70	
0212100-30-10	12 x 12 x 1.00	±0.060	30	
0212100-40-10	12 x 12 x 1.00	±0.060	40	
0212100-50-10	12 x 12 x 1.00	±0.060	50	
0212100-60-10	12 x 12 x 1.00	±0.060	60	
0212100-70-10	12 x 12 x 1.00	±0.060	70	

continued on the next page

SHEET STOCK

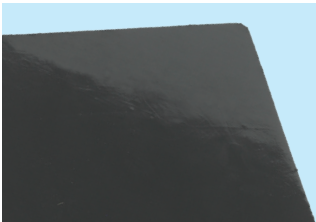
12" x 12" *continued*



PART NUMBER	DIMENSIONS	THICKNESS TOLERANCE	DURO +/- 5	NOTES
0212150-30-10	12 x 12 x 1.50	±0.075	30	
0212150-40-10	12 x 12 x 1.50	±0.075	40	
0212150-50-10	12 x 12 x 1.50	±0.075	50	
0212150-60-10	12 x 12 x 1.50	±0.075	60	
0212150-70-10	12 x 12 x 1.50	±0.075	70	
0212200-30-10	12 x 12 x 2.00	±0.080	30	
0212200-40-10	12 x 12 x 2.00	±0.080	40	
0212200-50-10	12 x 12 x 2.00	±0.080	50	
0212200-60-10	12 x 12 x 2.00	±0.080	60	
0212200-70-10	12 x 12 x 2.00	±0.080	70	

SHEET STOCK

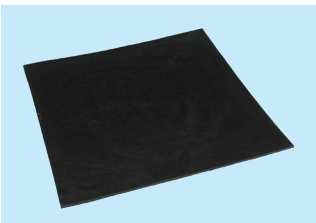
13" x 15"



PART NUMBER	DIMENSIONS	THICKNESS TOLERANCE	DURO +/- 5	NOTES
0215012-40-10	13 x 15 x 0.125	±0.020	40	NEW
0215012-50-10	13 x 15 x 0.125	±0.020	50	NEW
0215012-60-10	13 x 15 x 0.125	±0.020	60	NEW
0215012-70-10	13 x 15 x 0.125	±0.020	70	NEW
0215018-40-10	13 x 15 x 0.188	±0.025	40	NEW
0215018-50-10	13 x 15 x 0.188	±0.025	50	NEW
0215018-60-10	13 x 15 x 0.188	±0.025	60	NEW
0215018-70-10	13 x 15 x 0.188	±0.025	70	NEW
0215025-30-10	13 x 15 x 0.250	±0.030	30	NEW
0215025-40-10	13 x 15 x 0.250	±0.030	40	NEW
0215025-50-10	13 x 15 x 0.250	±0.030	50	NEW
0215025-60-10	13 x 15 x 0.250	±0.030	60	NEW
0215025-70-10	13 x 15 x 0.250	±0.030	70	NEW

SHEET STOCK

24" x 24"

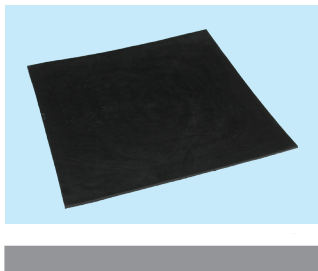


PART NUMBER	DIMENSIONS	THICKNESS TOLERANCE	DURO +/- 5	NOTES
0224010-40-10	24 x 24 x 0.100	±0.015	40	
0224010-50-10	24 x 24 x 0.100	±0.015	50	
0224010-60-10	24 x 24 x 0.100	±0.015	60	
0224010-70-10	24 x 24 x 0.100	±0.015	70	
0224012-40-10	24 x 24 x 0.125	±0.025	40	
0224012-50-10	24 x 24 x 0.125	±0.025	50	
0224012-60-10	24 x 24 x 0.125	±0.025	60	
0224012-70-10	24 x 24 x 0.125	±0.025	70	
0224018-40-10	24 x 24 x 0.188	±0.030	40	
0224018-50-10	24 x 24 x 0.188	±0.030	50	
0224018-60-10	24 x 24 x 0.188	±0.030	60	
0224018-70-10	24 x 24 x 0.188	±0.030	70	

continued on the next page

SHEET STOCK

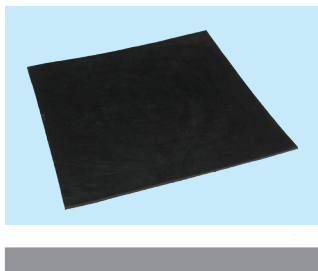
24" x 24" *continued*



PART NUMBER	DIMENSIONS	THICKNESS TOLERANCE	DURO +/- 5	NOTES
0224025-30-10	24 x 24 x 0.250	±0.040	30	
0224025-40-10	24 x 24 x 0.250	±0.040	40	
0224025-50-10	24 x 24 x 0.250	±0.040	50	
0224025-60-10	24 x 24 x 0.250	±0.040	60	
0224025-70-10	24 x 24 x 0.250	±0.040	70	
0224037-30-10	24 x 24 x 0.375	±0.040	30	
0224037-40-10	24 x 24 x 0.375	±0.040	40	
0224037-50-10	24 x 24 x 0.375	±0.040	50	
0224037-60-10	24 x 24 x 0.375	±0.040	60	
0224037-70-10	24 x 24 x 0.375	±0.040	70	
0224050-30-10	24 x 24 x 0.500	±0.045	30	
0224050-40-10	24 x 24 x 0.500	±0.045	40	
0224050-50-10	24 x 24 x 0.500	±0.045	50	
0224050-60-10	24 x 24 x 0.500	±0.045	60	
0224050-70-10	24 x 24 x 0.500	±0.045	70	
0224062-30-10	24 x 24 x 0.625	±0.060	30	
0224062-40-10	24 x 24 x 0.625	±0.060	40	
0224062-50-10	24 x 24 x 0.625	±0.060	50	
0224062-60-10	24 x 24 x 0.625	±0.060	60	
0224062-70-10	24 x 24 x 0.625	±0.060	70	
0224075-30-10	24 x 24 x 0.750	±0.060	30	
0224075-40-10	24 x 24 x 0.750	±0.060	40	
0224075-50-10	24 x 24 x 0.750	±0.060	50	
0224075-60-10	24 x 24 x 0.750	±0.060	60	
0224075-70-10	24 x 24 x 0.750	±0.060	70	
0224100-30-10	24 x 24 x 1.00	±0.070	30	
0224100-40-10	24 x 24 x 1.00	±0.070	40	
0224100-50-10	24 x 24 x 1.00	±0.070	50	
0224100-60-10	24 x 24 x 1.00	±0.070	60	
0224100-70-10	24 x 24 x 1.00	±0.070	70	
0224150-30-10	24 x 24 x 1.50	±0.075	30	
0224150-40-10	24 x 24 x 1.50	±0.075	40	
0224150-50-10	24 x 24 x 1.50	±0.075	50	
0224150-60-10	24 x 24 x 1.50	±0.075	60	
0224150-70-10	24 x 24 x 1.50	±0.075	70	

SHEET STOCK

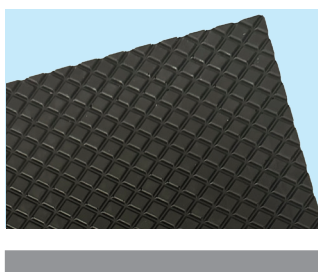
25" x 25"



PART NUMBER	DIMENSIONS	THICKNESS TOLERANCE	DURO +/- 5	NOTES
0225012-40-10	25 x 25 x 0.125	±0.025	40	
0225012-50-10	25 x 25 x 0.125	±0.025	50	
0225012-60-10	25 x 25 x 0.125	±0.025	60	
0225012-70-10	25 x 25 x 0.125	±0.025	70	
0225018-40-10	25 x 25 x 0.188	±0.030	40	
0225018-50-10	25 x 25 x 0.188	±0.030	50	
0225018-60-10	25 x 25 x 0.188	±0.030	60	
0225018-70-10	25 x 25 x 0.188	±0.030	70	
0225025-30-10	25 x 25 x 0.250	±0.040	30	
0225025-40-10	25 x 25 x 0.250	±0.040	40	
0225025-50-10	25 x 25 x 0.250	±0.040	50	
0225025-60-10	25 x 25 x 0.250	±0.040	60	
0225025-70-10	25 x 25 x 0.250	±0.040	70	
0225037-30-10	25 x 25 x 0.375	±0.040	30	
0225037-40-10	25 x 25 x 0.375	±0.040	40	
0225037-50-10	25 x 25 x 0.375	±0.040	50	
0225037-60-10	25 x 25 x 0.375	±0.040	60	
0225037-70-10	25 x 25 x 0.375	±0.040	70	
0225050-30-10	25 x 25 x 0.500	±0.045	30	
0225050-40-10	25 x 25 x 0.500	±0.045	40	
0225050-50-10	25 x 25 x 0.500	±0.045	50	
0225050-60-10	25 x 25 x 0.500	±0.045	60	
0225050-70-10	25 x 25 x 0.500	±0.045	70	

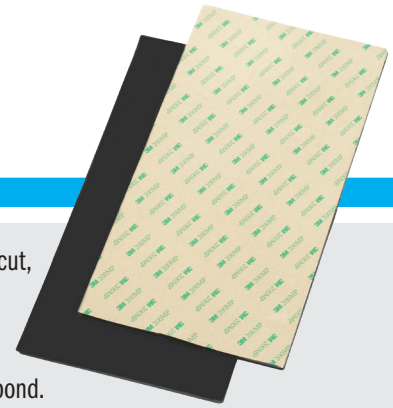
SHEET STOCK

Diamond Pattern
13" x 15"



PART NUMBER	DIMENSIONS	THICKNESS TOLERANCE	DURO +/- 5	NOTES
0213012-40-10	13 x 15 x 0.125	±0.020	40	
0213012-50-10	13 x 15 x 0.125	±0.020	50	
0213012-60-10	13 x 15 x 0.125	±0.020	60	
0213012-70-10	13 x 15 x 0.125	±0.020	70	
0213012-80-10	13 x 15 x 0.125	±0.020	80	
0213018-40-10	13 x 15 x 0.188	±0.025	40	
0213018-50-10	13 x 15 x 0.188	±0.025	50	
0213018-60-10	13 x 15 x 0.188	±0.025	60	
0213018-70-10	13 x 15 x 0.188	±0.025	70	
0213018-80-10	13 x 15 x 0.188	±0.025	80	
0213025-40-10	13 x 15 x 0.250	±0.030	40	
0213025-50-10	13 x 15 x 0.250	±0.030	50	
0213025-60-10	13 x 15 x 0.250	±0.030	60	
0213025-70-10	13 x 15 x 0.250	±0.030	70	
0213025-80-10	13 x 15 x 0.250	±0.030	80	

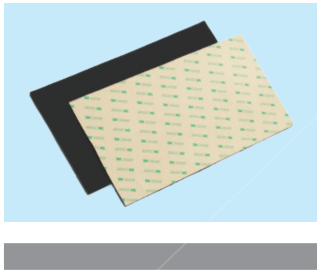
Sorbothane® Sheet Stock with PSA



Sorbothane® Sheets with PSA are available in several sizes, thicknesses and durometers. Sheet Stock can be knife-cut, scissor-cut, die cut or water jet cut. The aggressive pressure sensitive adhesive features a thin polyester film for dimensional stability and improved handling. The adhesive demonstrates exceptional temperature and chemical resistance. Firm application pressure and the amount of adhesive-to-surface contact combine to develop a strong bond.

SHEET STOCK

4" x 6" with PSA



PART NUMBER	DIMENSIONS	THICKNESS TOLERANCE	DURO +/- 5	NOTES
0208045-40-10	4 x 6 x 0.040	±0.010	40	
0208045-50-10	4 x 6 x 0.040	±0.010	50	
0208045-60-10	4 x 6 x 0.040	±0.010	60	
0208045-70-10	4 x 6 x 0.040	±0.010	70	
0208065-40-10	4 x 6 x 0.060	±0.010	40	
0208065-50-10	4 x 6 x 0.060	±0.010	50	
0208065-60-10	4 x 6 x 0.060	±0.010	60	
0208065-70-10	4 x 6 x 0.060	±0.010	70	

SHEET STOCK

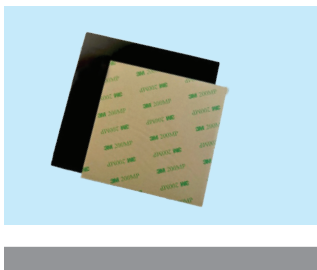
4" x 4" and 5" x 5" with PSA



PART NUMBER	DIMENSIONS	THICKNESS TOLERANCE	DURO +/- 5	NOTES
0204051-30-10	4 x 4 x 0.500	±0.030	30	NEW
0204051-40-10	4 x 4 x 0.500	±0.030	40	NEW
0204051-50-10	4 x 4 x 0.500	±0.030	50	NEW
0204051-60-10	4 x 4 x 0.500	±0.030	60	NEW
0204051-70-10	4 x 4 x 0.500	±0.030	70	NEW
0205051-30-10	5 x 5 x 0.500	±0.030	30	NEW
0205051-40-10	5 x 5 x 0.500	±0.030	40	NEW
0205051-50-10	5 x 5 x 0.500	±0.030	50	NEW
0205051-60-10	5 x 5 x 0.500	±0.030	60	NEW
0205051-70-10	5 x 5 x 0.500	±0.030	70	NEW

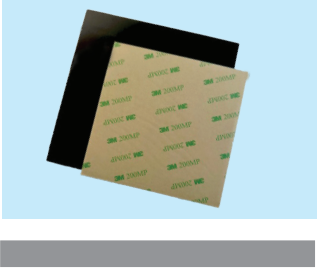
SHEET STOCK

6" x 6" with PSA



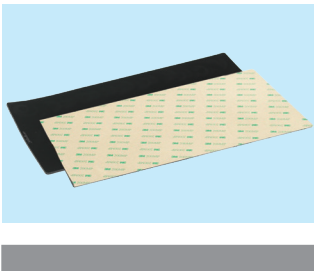
PART NUMBER	DIMENSIONS	THICKNESS TOLERANCE	DURO +/- 5	NOTES
0206081-40-10	6 x 6 x 0.080	±0.015	40	
0206081-50-10	6 x 6 x 0.080	±0.015	50	
0206081-60-10	6 x 6 x 0.080	±0.015	60	
0206081-70-10	6 x 6 x 0.080	±0.015	70	

SHEET STOCK
7" x 7" with PSA



PART NUMBER	DIMENSIONS	THICKNESS TOLERANCE	DURO +/- 5	NOTES
0208049-40-10	7 x 7 x 0.040	±0.007	40	
0208049-50-10	7 x 7 x 0.040	±0.007	50	
0208049-60-10	7 x 7 x 0.040	±0.007	60	
0208049-70-10	7 x 7 x 0.040	±0.007	70	
0277065-40-10	7 x 7 x 0.060	±0.010	40	
0277065-50-10	7 x 7 x 0.060	±0.010	50	
0277065-60-10	7 x 7 x 0.060	±0.010	60	
0277065-70-10	7 x 7 x 0.060	±0.010	70	

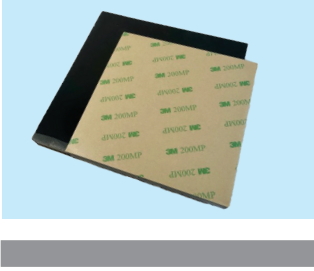
SHEET STOCK
6" x 12" with PSA



PART NUMBER	DIMENSIONS	THICKNESS TOLERANCE	DURO +/- 5	NOTES
0206110-30-10	6 x 12 x 0.100	±0.020	30	
0206110-40-10	6 x 12 x 0.100	±0.020	40	
0206110-50-10	6 x 12 x 0.100	±0.020	50	
0206110-60-10	6 x 12 x 0.100	±0.020	60	
0206110-70-10	6 x 12 x 0.100	±0.020	70	
0206112-30-10	6 x 12 x 0.125	±0.025	30	
0206112-40-10	6 x 12 x 0.125	±0.025	40	
0206112-50-10	6 x 12 x 0.125	±0.025	50	
0206112-60-10	6 x 12 x 0.125	±0.025	60	
0206112-70-10	6 x 12 x 0.125	±0.025	70	
0206119-30-10	6 x 12 x 0.188	±0.025	30	
0206119-40-10	6 x 12 x 0.188	±0.025	40	
0206119-50-10	6 x 12 x 0.188	±0.025	50	
0206119-60-10	6 x 12 x 0.188	±0.025	60	
0206119-70-10	6 x 12 x 0.188	±0.025	70	
0206126-30-10	6 x 12 x 0.250	±0.025	30	
0206126-40-10	6 x 12 x 0.250	±0.025	40	
0206126-50-10	6 x 12 x 0.250	±0.025	50	
0206126-60-10	6 x 12 x 0.250	±0.025	60	
0206126-70-10	6 x 12 x 0.250	±0.025	70	

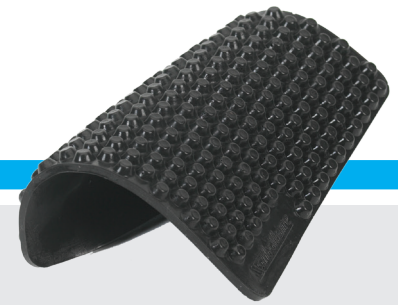
SHEET STOCK

12" x 12" with PSA



PART NUMBER	DIMENSIONS	THICKNESS TOLERANCE	DURO +/- 5	NOTES
0212013-30-10	12 x 12 x 0.125	±0.025	30	
0212013-40-10	12 x 12 x 0.125	±0.025	40	
0212013-50-10	12 x 12 x 0.125	±0.025	50	
0212013-60-10	12 x 12 x 0.125	±0.025	60	
0212013-70-10	12 x 12 x 0.125	±0.025	70	
0212026-30-10	12 x 12 x 0.250	±0.025	30	
0212026-40-10	12 x 12 x 0.250	±0.025	40	
0212026-50-10	12 x 12 x 0.250	±0.025	50	
0212026-60-10	12 x 12 x 0.250	±0.025	60	
0212026-70-10	12 x 12 x 0.250	±0.025	70	
0212051-30-10	12 x 12 x 0.500	±0.035	30	
0212051-40-10	12 x 12 x 0.500	±0.035	40	
0212051-50-10	12 x 12 x 0.500	±0.035	50	
0212051-60-10	12 x 12 x 0.500	±0.035	60	
0212051-70-10	12 x 12 x 0.500	±0.035	70	
0212101-30-10	12 x 12 x 1.00	±0.060	30	
0212101-40-10	12 x 12 x 1.00	±0.060	40	
0212101-50-10	12 x 12 x 1.00	±0.060	50	
0212101-60-10	12 x 12 x 1.00	±0.060	60	
0212101-70-10	12 x 12 x 1.00	±0.060	70	

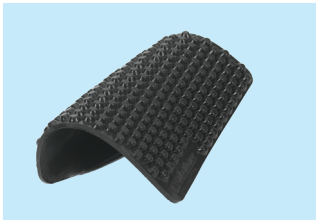
Sorbothane® X-Tra Flex Sheet Stock



X-Tra Flex Sheet is molded with hemispherical bumps. The hemispheres permit the material to flex more easily and allow for soft deformation under load.

SHEET STOCK

X-Tra Flex
4" x 4" & 12" x 14"



PART NUMBER	DIMENSIONS	THICKNESS TOLERANCE	DURO +/- 5	NOTES
0225304-40-10	4 x 4 x .188	±0.020	40	
0225304-50-10	4 x 4 x .188	±0.020	50	
0225304-60-10	4 x 4 x .188	±0.020	60	
0225304-70-10	4 x 4 x .188	±0.020	70	
0225532-40-10	12 x 14 x 0.19	±0.025	40	
0225532-50-10	12 x 14 x 0.19	±0.025	50	
0225532-60-10	12 x 14 x 0.19	±0.025	60	
0225532-70-10	12 x 14 x 0.19	±0.025	70	

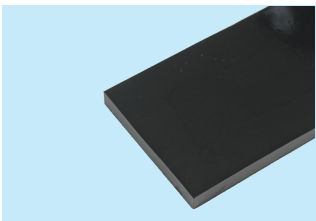
Sorbothane® Strips

Sorbothane® Strips offer a quick and effective method for isolating a wide variety of equipment. Choose the correct thickness, durometer and number of Strips required for the load. Sorbothane® Strips can easily be cut to size and are ideal for medium to heavy loads.



STRIPS

2" x 36"



PART NUMBER	DIMENSIONS	THICKNESS TOLERANCE	DURO +/- 5	NOTES
0236212-50-10	2 x 36 x 0.125	±0.015	50	
0236212-70-10	2 x 36 x 0.125	±0.015	70	
0236225-50-10	2 x 36 x 0.250	±0.020	50	
0236225-70-10	2 x 36 x 0.250	±0.020	70	
0236237-30-10	2 x 36 x 0.375	±0.025	30	
0236237-50-10	2 x 36 x 0.375	±0.025	50	
0236237-70-10	2 x 36 x 0.375	±0.025	70	
0236250-30-10	2 x 36 x 0.500	±0.030	30	
0236250-50-10	2 x 36 x 0.500	±0.030	50	
0236250-70-10	2 x 36 x 0.500	±0.030	70	
0236275-30-10	2 x 36 x 0.750	±0.035	30	
0236275-50-10	2 x 36 x 0.750	±0.035	50	
0236275-70-10	2 x 36 x 0.750	±0.035	70	

Sorbothane® Ergonomic Products

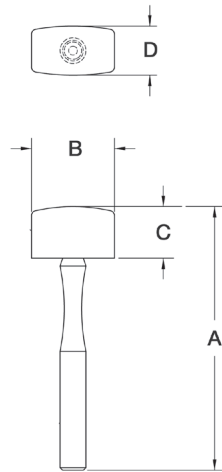


Soft-Blow Mallet

- No-Denting • No-Marring • No-Jarring

The **Sorbothane® Soft-Blow Mallet** actually conforms to surface irregularities, providing maximum contact without denting or marring surfaces. Because impact is dissipated within the **Sorbothane®** material - hand jarring and harmful shock is virtually eliminated. Commonly used for fine woodworking, window installation, remodeling and auto body repair - to name a few.

Three sizes available to fit any job - safe for use on wood, metal, vinyl, tile, glass and plastic.



PART NUMBER	DIMENSIONS				DURO +/- 5	STOCK ITEM	HEAD WEIGHT
	A	B	C	D			
0575496-70-20	11.00	2.88	1.78	1.83	70	•	5.5 oz. Small
0575490-70-20	12.75	3.94	2.50	2.25	70	•	12 oz. Medium
0575485-70-20	13.00	4.35	2.75	2.73	70	•	20 oz. Large



Sorbothane® Performance Insoles

Sorbothane® insoles provide impact shock protection, cushioning, comfort and long-lasting performance. An excellent choice for anyone who walks, runs, competes, or just spends time on their feet - **Sorbothane®** Comfort & Performance Insoles are 100% Made In The USA.

Please call **800.838.3906** or visit www.insoles-sorbothane.com for complete product information.

Sorbothane® Material Properties

Material Properties of Sorbothane®

PROPERTY	DUROMETER (SHORE 00)			UNITS	NOTES
	30	50	70		
Tensile Strength at Break	26	107	191	psi	ASTM D 412-06a
Elongation at Break	334	765	388	%	ASTM D 412-06a
Compression Set	10	3	2	%	ASTM D 395
Bulk Modulus	4.5	5.0	4.3	gPascal	
Density	83	84	85	lb/ft ³	ASTME D 792-13
Optimum Performance Temperature Range	-20° to +140°	-20° to +150°	-20° to +160°	°F	Reduced strength and damping up to 200 °F. Increased spring rate down to glass transition temperature.
Fungal Resistance	No Growth				ASTM G 22

Material Properties of Water Resistant Sorbothane®

PROPERTY	DUROMETER (SHORE 00)			UNITS	NOTES
	30	50	70		
Tensile Strength at Break	130	131	170	psi	ASTM D 412-06a
Elongation at Break	342	219	154	%	ASTM D 412-06a
Compression Set	10	2	3	%	ASTM D 395
Bulk Modulus	4.25	3.99	4.14	gPascal	
Density	78.78	79.78	79.60	lb/ft ³	ASTME D 792-13
Optimum Performance Temperature Range	-20° to +140°	-20° to +150°	-20° to +160°	°F	Reduced strength and damping up to 200 °F. Increased spring rate down to glass transition temperature.
Fungal Resistance	No Growth				ASTM G 22

Sorbothane® meets or exceeds the following compliance policies: RoHS • REACH • PROP 65 • Conflict Materials • Latex Free



Sorbothane®

Online
**Design Guide
Calculators**
for working with
Sorbothane
sorbothane.com



Sorbothane, Inc. Industrial Distributors

Sorbothane® distributors stock many of the most popular standard products but not all of them. Please check with the distributor listed for the products they carry and availability.

McMaster-Carr Supply Company

Distributing most Sorbothane Standard Products.
www.mcmaster.com

Chicago Office

Sales: 630.833.0300
Fax: 630.834.9427
Other: 630.600.3600
600 County Line Rd.
Elmhurst, IL 60126-2081

Atlanta Office

Sales: 404.346.7000
Fax: 404.349.9091
Other: 404.260.8080
6100 Fulton Industrial Blvd. SW
Atlanta, GA 30336-2852

Cleveland Office

Sales: 330.995.5500
Fax: 330.995.9600
Other: 330.342.3330
200 Aurora Industrial Pkwy.
Aurora, OH 44202

Los Angeles Office

Sales: 562.692.5911
Fax: 562.695.2323
Other: 562.641.2800
9630 Norwalk Blvd.
Santa Fe Springs, CA 90670-2932

New York City - Philadelphia Office

Sales: 609.689.3000
Fax: 609.259.3575
Other: 609.259.8900
200 New Canton Way
Princeton, NJ 08543-5370

Advanced Anti-vibration Components

Distributing Sorbothane industrial stud mounts.
www.vibrationmounts.com
2101 Jericho Turnpike
New Hyde Park, NY 11402-5416
Phone: 516.328.3662
Fax: 516.328.3365

W.M. Berg Company

Distributing many Sorbothane Standard Products.
www.wmberg.com
499 Ocean Avenue
East Rockaway, NY 11518
Phone: 800.232.2374 or 516.596.1700
Fax: 800.455.2374 or 516.599.3277

Edmund Scientific

Distributing shock attenuating Sorbothane sheet stock.
www.scientificsonline.com
60 Pearce Ave.
Tonawanda, NY 14150
Phone: 800.728.6999

Thorlabs

Distributing vibration isolating feet and sheets for photonics applications.
www.thorlabs.com
56 Sparta Ave.
Newton, NJ 07860
Phone: 973.579.7227

Isolate It!

Distributing most Sorbothane Standard Products.
www.isolateit.com
2966 S. Church St., Suite 101
Burlington, NC 27215
Phone: 800.399.7316
Fax: 800.388.7316

MPTRONIX

Distributing most Sorbothane Standard Products.
www.mptronix.com
2700 Braselton Highway, Suite 10280
Dacula, GA 30019
Phone: 706.654.1200
Fax: 706.654.1300

JLM Acoustics, LLC.

Vibration, shock, noise and thermal control solutions.
www.jlmacoustics.com
13900 Reflections Drive
Suite 422
Baldwin, MO 63021
Phone: 888.814.9916

Gelmecc

Distributing Sorbothane sound damping and isolation products.
www.gelmecc.co.uk
Gelmecc European Office
Marcom House,
1-2 Steam Mill Lane,
Great Yarmouth,
Norfolk,
NR31 0HP,
United Kingdom
Phone: +44 1493 668622
Fax: +44 1493 668623

CREDIMEX AG

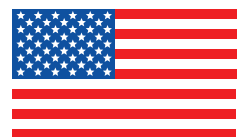
Distributing Sorbothane products in -
SWITZERLAND / LICHTENSTEIN / AUSTRIA
www.credimex.ch
Untere Gründlistrasse 7
CH-6055 Alpnach
Phone: +41 41 666 29 49
Mail: credimex@credimex.ch

Sorbothane®

2144 State Route 59 | Kent, Ohio 44240 USA

800.838.3906 USA Only | PH: 330.678.9444 | FAX: 330.678.1303 | sales@sorbothane.com

sorbothane.com



MADE IN THE U.S.A.