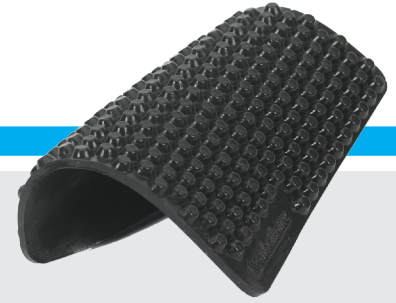


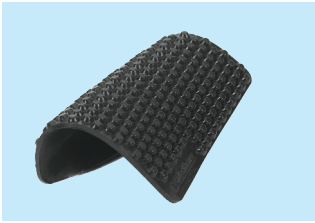
# Sorbothane® X-Tra Flex Sheet Stock



X-Tra Flex Sheet is molded with hemispherical bumps. The hemispheres permit the material to flex more easily and allow for soft deformation under load.

## SHEET STOCK

*X-Tra Flex*  
12" x 14"



PART NUMBER	THICKNESS	THICKNESS TOLERANCE	DURO	NOTES
0225532-40-10	0.19	±0.025	40	
0225532-50-10	0.19	±0.025	50	
0225532-60-10	0.19	±0.025	60	
0225532-70-10	0.19	±0.025	70	

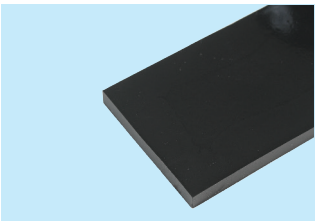
# Sorbothane® Strips



Sorbothane® Strips offer a quick and effective method for isolating a wide variety of equipment. Choose the correct thickness, durometer and number of Strips required for the load. Sorbothane® Strips can easily be cut to size and are ideal for medium to heavy loads.

## STRIPS

2" x 36"



PART NUMBER	THICKNESS	THICKNESS TOLERANCE	DURO	NOTES
0236212-50-10	0.125	±0.015	50	
0236212-70-10	0.125	±0.015	70	
0236225-50-10	0.25	±0.020	50	
0236225-70-10	0.25	±0.020	70	
0236237-30-10	0.375	±0.025	30	
0236237-50-10	0.375	±0.025	50	
0236237-70-10	0.375	±0.025	70	
0236250-30-10	0.50	±0.030	30	
0236250-50-10	0.50	±0.030	50	
0236250-70-10	0.50	±0.030	70	