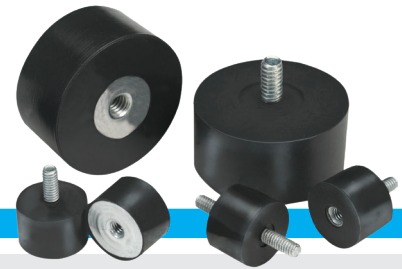


Sorbothane® Stud Mounts & Bumpers

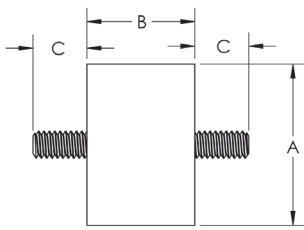
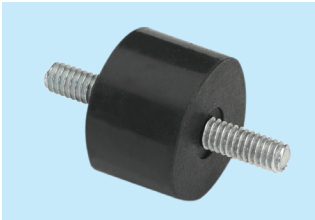


Sorbothane® Stud Mounts, with metal inserts, are available in three standard sizes that utilize both UNC and metric threads. Other UNC and metric threads are available by special order. These Stud Mounts and Bumpers are designed for use in compression.

Use high-quality (thread deforming) lock nuts or double jam nuts to assure your connections do not vibrate loose. High amplitude vibrations require special, heavy-duty inserts. Please consult with the Sorbothane engineering department.

STUD MOUNTS

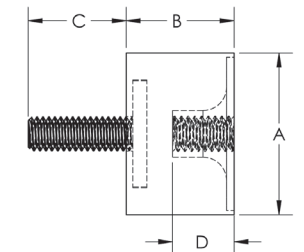
Male-Male



PART NUMBER	STYLE	THREAD	DIMENSIONS			DURO +/- 5	RATED LOAD (lbs)	NOTES
			A	B	C			
0510310-50-10	M-M	#8-32	0.75	0.50	0.47	50	4 - 8	
0510310-70-10	M-M	#8-32	0.75	0.50	0.47	70	8 - 12	
0510330-50-10	M-M	¼-20	1.50	1.00	0.50	50	11 - 16	
0510330-70-10	M-M	¼-20	1.50	1.00	0.50	70	19 - 27	
0510350-50-10	M-M	¼-20	1.75	0.85	0.50	50	20 - 40	
0510350-70-10	M-M	¼-20	1.75	0.85	0.50	70	35 - 75	
METRIC								
0510410-50-10	M-M	M4	19	12.7	12.0	50	4 - 8	
0510410-70-10	M-M	M4	19	12.7	12.0	70	8 - 12	
0510430-50-10	M-M	M6	38.1	25.4	12.7	50	11 - 15	
0510430-70-10	M-M	M6	38.1	25.4	12.7	70	18 - 26	
0510450-50-10	M-M	M6	44.5	21.6	12.7	50	20 - 40	
0510450-70-10	M-M	M6	44.5	21.6	12.7	70	35 - 75	

STUD MOUNTS

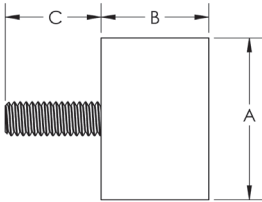
Male-Female



PART NUMBER	STYLE	THREAD	DIMENSIONS				DURO +/- 5	RATED LOAD (lbs)	NOTES
			A	B	C	D			
0510311-50-10	M-F	#8-32	0.75	0.50	0.47	0.25	50	3 - 6	
0510311-70-10	M-F	#8-32	0.75	0.50	0.47	0.25	70	5 - 12	
0510331-50-10	M-F	¼-20	1.50	1.00	0.50	0.35	50	11 - 18	
0510331-70-10	M-F	¼-20	1.50	1.00	0.50	0.35	70	18 - 30	
0510351-50-10	M-F	¼-20	1.75	0.85	0.50	0.35	50	20 - 40	
0510351-70-10	M-F	¼-20	1.75	0.85	0.50	0.35	70	36 - 75	
METRIC									
0510411-50-10	M-F	M4	19	12.7	12.0	6.35	50	3 - 6	
0510411-70-10	M-F	M4	19	12.7	12.0	6.35	70	5 - 12	
0510431-50-10	M-F	M6	38.1	25.4	12.7	8.9	50	11 - 18	
0510431-70-10	M-F	M6	38.1	25.4	12.7	8.9	70	18 - 29	
0510451-50-10	M-F	M6	44.5	21.6	12.7	8.9	50	20 - 40	
0510451-70-10	M-F	M6	44.5	21.6	12.7	8.9	70	35 - 75	

BUMPERS

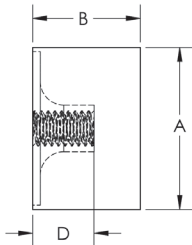
Male



PART NUMBER	STYLE	THREAD	DIMENSIONS			DURO +/- 5	RATED LOAD (lbs)	NOTES
			A	B	C			
0510312-50-10	Male	#8-32	0.75	0.50	0.47	50	2 - 4	
0510312-70-10	Male	#8-32	0.75	0.50	0.47	70	7 - 16	
0510332-50-10	Male	¼-20	1.50	1.00	0.50	50	7 - 14	
0510332-70-10	Male	¼-20	1.50	1.00	0.50	70	30 - 65	
0510352-50-10	Male	¼-20	1.75	0.85	0.50	50	10 - 22	
0510352-70-10	Male	¼-20	1.75	0.85	0.50	70	45 - 100	
METRIC								
0510412-50-10	Male	M4	19	12.7	12.0	50	2 - 4	
0510412-70-10	Male	M4	19	12.7	12.0	70	7 - 16	
0510432-50-10	Male	M6	38.1	25.4	12.7	50	7 - 14	
0510432-70-10	Male	M6	38.1	25.4	12.7	70	30 - 65	
0510452-50-10	Male	M6	44.5	21.6	12.7	50	10 - 22	
0510452-70-10	Male	M6	44.5	21.6	12.7	70	45 - 100	

BUMPERS

Female



PART NUMBER	STYLE	THREAD	DIMENSIONS			DURO +/- 5	RATED LOAD (lbs)	NOTES
			A	B	D			
0510313-50-10	Female	#8-32	0.75	0.50	0.25	50	3-5	
0510313-70-10	Female	#8-32	0.75	0.50	0.25	70	6-8	
0510333-50-10	Female	¼-20	1.50	1.00	0.35	50	11-18	
0510333-70-10	Female	¼-20	1.50	1.00	0.35	70	18-27	
0510353-50-10	Female	¼-20	1.75	0.85	0.35	50	20-40	
0510353-70-10	Female	¼-20	1.75	0.85	0.35	70	35-75	
METRIC								
0510413-50-10	Female	M4	19	12.7	6.35	50	3 - 5	
0510413-70-10	Female	M4	19	12.7	6.35	70	6 - 8	
0510433-50-10	Female	M6	38.1	25.4	8.9	50	11-18	
0510433-70-10	Female	M6	38.1	25.4	8.9	70	18-26	
0510453-50-10	Female	M6	44.5	21.6	8.9	50	20-40	
0510453-70-10	Female	M6	44.5	21.6	8.9	70	35-75	